

Product Name: Phospho-MEK1 (Ser298) Rabbit Polyclonal Antibody
Catalog #: APRab00703

Summary

Production Name	Phospho-MEK1 (Ser298) Rabbit Polyclonal Antibody
Description	Rabbit Polyclonal Antibody
Host	Rabbit
Application	WB,IHC-P,ICC/IF
Reactivity	Human,Mouse,Rat

Performance

Conjugation	Unconjugated
Modification	Phosphorylated
Isotype	IgG
Clonality	Polyclonal
Form	Liquid
Storage	Store at 4°C short term. Aliquot and store at -20°C long term. Avoid freeze/thaw cycles.
Buffer	Rabbit IgG in phosphate buffered saline , pH 7.4, 150mM NaCl, 0.02% sodium azide and 50% glycerol.
Purification	Affinity Chromatography

Immunogen

Gene Name	MAP2K1 MAP2K1; MEK1; PRKMK1; Dual specificity mitogen-activated protein kinase kinase 1;
Alternative Names	MAP kinase kinase 1; MAPKK 1; MKK1; ERK activator kinase 1; MAPK/ERK kinase 1; MEK 1
Gene ID	5604
SwissProt ID	Q02750.

Application

Dilution Ratio	WB: 1:500-1:1000 IHC: 1:50-1:100 IF: 1:50-1:200
Molecular Weight	Calculated MW: 43 kDa; Observed MW: 43 kDa

**Product Name: Phospho-MEK1 (Ser298) Rabbit
Polyclonal Antibody**
Catalog #: APRab00703



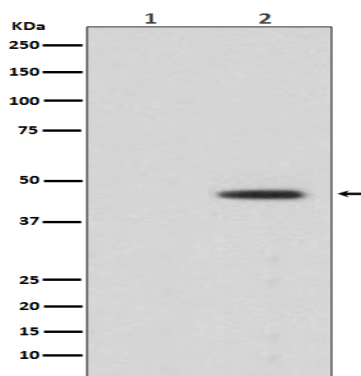
Background

The protein encoded by this gene is a member of the dual specificity protein kinase family, which acts as a mitogen-activated protein (MAP) kinase kinase. MAP kinases, also known as extracellular signal-regulated kinases (ERKs), act as an integration point for multiple biochemical signals.

Research Area

Signal Transduction

Image Data



Western blot analysis of Phospho-MEK1 (S298) in (1) HeLa treated with LP lysates; (2) HeLa lysates using Phospho-MEK1 (Ser298) antibody.

Note

For research use only.