

Product Name: Phospho-IRE1 (Ser724) Rabbit Polyclonal Antibody
Catalog #: APRab00695

Summary

Production Name	Phospho-IRE1 (Ser724) Rabbit Polyclonal Antibody
Description	Rabbit Polyclonal Antibody
Host	Rabbit
Application	WB
Reactivity	Human

Performance

Conjugation	Unconjugated
Modification	Phosphorylated
Isotype	IgG
Clonality	Polyclonal
Form	Liquid
Storage	Store at 4°C short term. Aliquot and store at -20°C long term. Avoid freeze/thaw cycles.
Buffer	Rabbit IgG in phosphate buffered saline , pH 7.4, 150mM NaCl, 0.02% sodium azide and 50% glycerol.
Purification	Affinity Chromatography

Immunogen

Gene Name	ERN1
Alternative Names	ERN1; IRE1; Serine/threonine-protein kinase/endoribonuclease IRE1; Endoplasmic reticulum-to-nucleus signaling 1; Inositol-requiring protein 1; hIRE1p; Ire1-alpha; IRE1a
Gene ID	2081
SwissProt ID	O75460.

Application

Dilution Ratio	WB: 1:500-1:1000
Molecular Weight	Calculated MW: 110 kDa; Observed MW: 110 kDa

Product Name: Phospho-IRE1 (Ser724) Rabbit Polyclonal Antibody
Catalog #: AP Rab00695

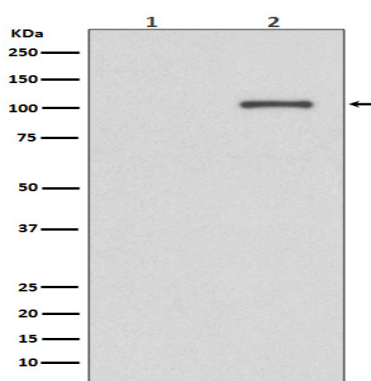
Background

Senses unfolded proteins in the lumen of the endoplasmic reticulum via its N-terminal domain which leads to enzyme auto-activation. The active endoribonuclease domain splices XBP1 mRNA to generate a new C-terminus, converting it into a potent unfolded-protein response transcriptional activator and triggering growth arrest and apoptosis.

Research Area

Signal Transduction

Image Data



Western blot analysis of Phospho-IRE1 (S724) in (1) K562 lysates treated with AP; (2) Untreated K562 lysates using Phospho-IRE1 (Ser724) antibody.

Note

For research use only.