

**Product Name: TriMethyl-Histone H4 (Lys20) Rabbit Polyclonal Antibody**  
**Catalog #: APRab00692**

---



## Summary

<b>Production Name</b>	TriMethyl-Histone H4 (Lys20) Rabbit Polyclonal Antibody
<b>Description</b>	Rabbit Polyclonal Antibody
<b>Host</b>	Rabbit
<b>Application</b>	WB,IHC-P
<b>Reactivity</b>	Human,Mouse,Rat

## Performance

<b>Conjugation</b>	Unconjugated
<b>Modification</b>	Methylated
<b>Isotype</b>	IgG
<b>Clonality</b>	Polyclonal
<b>Form</b>	Liquid
<b>Storage</b>	Store at 4°C short term. Aliquot and store at -20°C long term. Avoid freeze/thaw cycles.
<b>Buffer</b>	Rabbit IgG in phosphate buffered saline , pH 7.4, 150mM NaCl, 0.02% sodium azide and 50% glycerol.
<b>Purification</b>	Affinity Chromatography

## Immunogen

<b>Gene Name</b>	H4C1
<b>Alternative Names</b>	H4K20me3; H4F2; HIST; HIST1H4A; Histone H4
<b>Gene ID</b>	121504
<b>SwissProt ID</b>	P62805.

## Application

<b>Dilution Ratio</b>	WB: 1:500-1:1000 IHC: 1:50-1:100
<b>Molecular Weight</b>	Calculated MW: 11 kDa; Observed MW: 11 kDa

**Product Name: TriMethyl-Histone H4 (Lys20) Rabbit  
Polyclonal Antibody**  
**Catalog #: APRab00692**



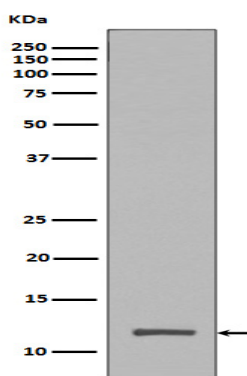
## Background

The chromatin fiber is further compacted through the interaction of a linker histone, H1, with the DNA between the nucleosomes to form higher order chromatin structures. This gene is intronless and encodes a member of the histone H4 family.

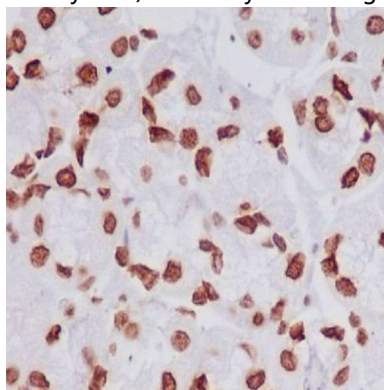
## Research Area

Epigenetics and Nuclear Signaling

## Image Data



Western blot analysis of Histone H4 (tri methyl K20) in HeLa lysates using TriMethyl-Histone H4 (Lys20) antibody.



Immunohistochemistry analysis of paraffin-embedded Human stomach using Histone H4 (tri methyl K20) antibody. High-pressure and temperature Sodium Citrate pH 6.0 was used for antigen retrieval.

## Note

For research use only.