

**Product Name: Cytokeratin Rabbit Polyclonal Antibody**  
**Catalog #: APRab00651**



## Summary

<b>Production Name</b>	Cytokeratin Rabbit Polyclonal Antibody
<b>Description</b>	Rabbit Polyclonal Antibody
<b>Host</b>	Rabbit
<b>Application</b>	WB,ELISA
<b>Reactivity</b>	Human,Mouse,Rat

## Performance

<b>Conjugation</b>	Unconjugated
<b>Modification</b>	Unmodified
<b>Isotype</b>	IgG
<b>Clonality</b>	Polyclonal
<b>Form</b>	Liquid
<b>Storage</b>	Store at 4°C short term. Aliquot and store at -20°C long term. Avoid freeze/thaw cycles.
<b>Buffer</b>	Liquid in PBS containing 50% glycerol, 0.5% BSA and 0.02% sodium azide, pH 7.3.
<b>Purification</b>	Affinity Purification

## Immunogen

<b>Gene Name</b>	Keratin KRT2A; KRT2E; KRT2B; KRT2P; K6A; KRT6D; K6B; KRTL1; KRT6E; K6IRS1; KB34; KRT6IRS1;
<b>Alternative Names</b>	K6IRS2; KB35; KRT6; KRT6IRS2; K6IRS3; KB36; KRT6IRS3; K6IRS4; KB37; KRT5C; KRT6IRS4; K6HF; KB18; K6L; KB38; KRT6L; SCL; CYK8; KRTHB4
<b>Gene ID</b>	3849.0
<b>SwissProt ID</b>	P35908/Q01546/P12035/P13647/P02538/P04259/P48668/Q3SY84/Q14CN4/ Q86Y46/Q7RTS7/O95678/Q5XKE5/P08729/P05787/Q9NSB2.

## Application

<b>Dilution Ratio</b>	WB: 1:500-1:1000 ELISA: 1:10000
<b>Molecular Weight</b>	Calculated MW: 65 kDa; Observed MW: 70 kDa

**Product Name: Cytokeratin Rabbit Polyclonal Antibody**  
**Catalog #: APRab00651**



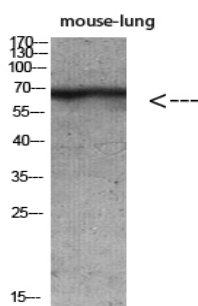
## Background

Probably contributes to terminal cornification. Associated with keratinocyte activation, proliferation and keratinization.

## Research Area

Signal Transduction

## Image Data



Western blot analysis of Cytokeratin in mouse lung, mouse brain, mouse kidney, mouse heart lysates using Cytokeratin antibody.

## Note

For research use only.