

Product Name: ZFP36L1 Rabbit Polyclonal Antibody
Catalog #: APRab00592



Summary

Production Name	ZFP36L1 Rabbit Polyclonal Antibody
Description	Rabbit Polyclonal Antibody
Host	Rabbit
Application	WB,IHC-P,ELISA
Reactivity	Human,Mouse,Rat

Performance

Conjugation	Unconjugated
Modification	Unmodified
Isotype	IgG
Clonality	Polyclonal
Form	Liquid
Storage	Store at 4°C short term. Aliquot and store at -20°C long term. Avoid freeze/thaw cycles.
Buffer	Liquid in PBS containing 50% glycerol, 0.5% BSA and 0.02% sodium azide, pH 7.3.
Purification	Affinity Purification

Immunogen

Gene Name	ZFP36L1
Alternative Names	ZFP36L1; BERG36; BRF1; ERF1; RNF162B; TIS11B; Zinc finger protein 36; C3H1 type-like 1; Butyrate response factor 1; EGF-response factor 1; ERF-1; Protein TIS11B
Gene ID	677
SwissProt ID	Q07352.

Application

Dilution Ratio	WB: 1:500-1:1000 IHC: 1:50-1:100 ELISA: 1:10000
Molecular Weight	Calculated MW: 36 kDa; Observed MW: 36 kDa

Background

Product Name: ZFP36L1 Rabbit Polyclonal Antibody
Catalog #: AP Rab00592

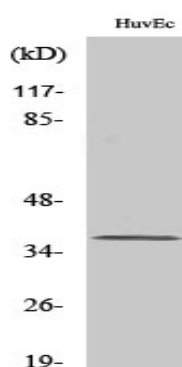


Zinc-finger RNA-binding protein that destabilizes several cytoplasmic AU-rich element (ARE)-containing mRNA transcripts by promoting their poly(A) tail removal or deadenylation, and hence provide a mechanism for attenuating protein synthesis.

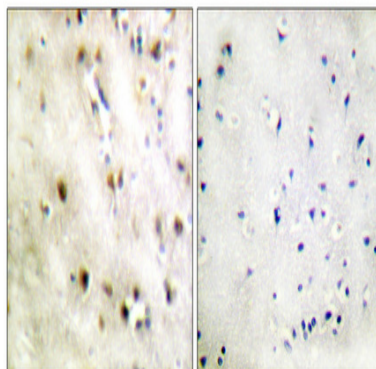
Research Area

Epigenetics and Nuclear Signaling

Image Data



Western blot analysis of ZFP36L1 in various lysates using ZFP36L1 antibody.



Immunohistochemistry analysis of paraffin-embedded Human brain using ZFP36L1 antibody. High-pressure and temperature Tris-EDTA pH 8.0 was used for antigen retrieval. Sample with blocking peptide on the right.

Note

For research use only.