

**Product Name: CD155 Rabbit Polyclonal Antibody**  
**Catalog #: APRab00569**



## Summary

<b>Production Name</b>	CD155 Rabbit Polyclonal Antibody
<b>Description</b>	Rabbit Polyclonal Antibody
<b>Host</b>	Rabbit
<b>Application</b>	WB,ELISA
<b>Reactivity</b>	Human,Mouse,Rat

## Performance

<b>Conjugation</b>	Unconjugated
<b>Modification</b>	Unmodified
<b>Isotype</b>	IgG
<b>Clonality</b>	Polyclonal
<b>Form</b>	Liquid
<b>Storage</b>	Store at 4°C short term. Aliquot and store at -20°C long term. Avoid freeze/thaw cycles.
<b>Buffer</b>	Liquid in PBS containing 50% glycerol, 0.5% BSA and 0.02% sodium azide, pH 7.3.
<b>Purification</b>	Affinity Purification

## Immunogen

<b>Gene Name</b>	PVR
<b>Alternative Names</b>	PVR; PVS; Poliovirus receptor; Nectin-like protein 5; NECL-5; CD155
<b>Gene ID</b>	5817
<b>SwissProt ID</b>	P15151.

## Application

<b>Dilution Ratio</b>	WB: 1:500-1:1000 ELISA: 1:10000
<b>Molecular Weight</b>	Calculated MW: 45 kDa; Observed MW: 45 kDa

## Background

Mediates NK cell adhesion and triggers NK cell effector functions. Binds two different NK cell receptors: CD96 and CD226.

**Product Name: CD155 Rabbit Polyclonal Antibody**  
**Catalog #: APRab00569**

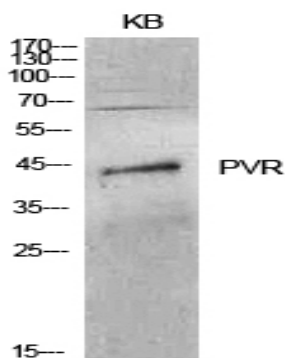


These interactions accumulates at the cell-cell contact site, leading to the formation of a mature immunological synapse between NK cell and target cell.

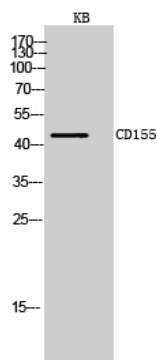
## Research Area

Immunology

## Image Data



Western blot analysis of CD155 in KB lysates using CD155 antibody.



Western blot analysis of CD155 in KB lysates using CD155 antibody.

## Note

For research use only.