

**Product Name: GDF6 Rabbit Polyclonal Antibody**  
**Catalog #: APRab00530**



## Summary

<b>Production Name</b>	GDF6 Rabbit Polyclonal Antibody
<b>Description</b>	Rabbit Polyclonal Antibody
<b>Host</b>	Rabbit
<b>Application</b>	WB,ELISA
<b>Reactivity</b>	Human,Mouse,Rat

## Performance

<b>Conjugation</b>	Unconjugated
<b>Modification</b>	Unmodified
<b>Isotype</b>	IgG
<b>Clonality</b>	Polyclonal
<b>Form</b>	Liquid
<b>Storage</b>	Store at 4°C short term. Aliquot and store at -20°C long term. Avoid freeze/thaw cycles.
<b>Buffer</b>	Liquid in PBS containing 50% glycerol, 0.5% BSA and 0.02% sodium azide, pH 7.3.
<b>Purification</b>	Affinity Purification

## Immunogen

<b>Gene Name</b>	GDF6
<b>Alternative Names</b>	GDF6; GDF16; Growth/differentiation factor 6; GDF-6; Growth/differentiation factor 16
<b>Gene ID</b>	392255
<b>SwissProt ID</b>	Q6KF10.

## Application

<b>Dilution Ratio</b>	WB: 1:500-1:1000 ELISA: 1:10000
<b>Molecular Weight</b>	Calculated MW: 51 kDa; Observed MW: 51 kDa

## Background

Growth factor that controls proliferation and cellular differentiation in the retina and bone formation.

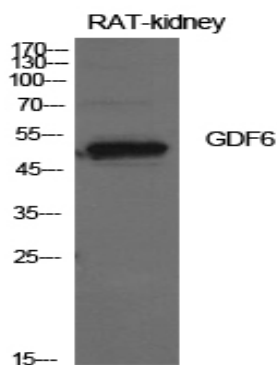
**Product Name: GDF6 Rabbit Polyclonal Antibody**  
**Catalog #: APRab00530**



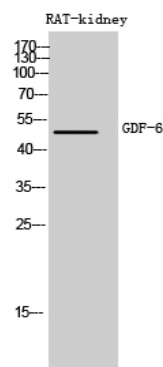
## Research Area

Signal Transduction

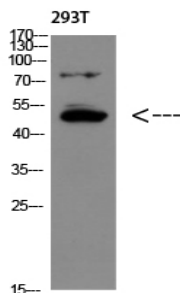
## Image Data



Western blot analysis of GDF6 in rat kidney lysates using GDF6 antibody.



Western blot analysis of GDF6 in rat kidney lysates using GDF6 antibody.



Western blot analysis of GDF6 in 293T lysates using GDF6 antibody.

## Note

**Product Name: GDF6 Rabbit Polyclonal Antibody**  
**Catalog #: APRab00530**

---



For research use only.