

Product Name: Mannose Receptor Rabbit Polyclonal Antibody
Catalog #: APRab00529



Summary

Production Name	Mannose Receptor Rabbit Polyclonal Antibody
Description	Rabbit Polyclonal Antibody
Host	Rabbit
Application	WB,IHC-P,ELISA
Reactivity	Human

Performance

Conjugation	Unconjugated
Modification	Unmodified
Isotype	IgG
Clonality	Polyclonal
Form	Liquid
Storage	Store at 4°C short term. Aliquot and store at -20°C long term. Avoid freeze/thaw cycles.
Buffer	Liquid in PBS containing 50% glycerol, 0.5% BSA and 0.02% sodium azide, pH 7.3.
Purification	Affinity Purification

Immunogen

Gene Name	MRC1 MRC1; CLEC13D; CLEC13DL; MRC1L1; Macrophage mannose receptor 1; MMR; C-type
Alternative Names	lectin domain family 13 member D; C-type lectin domain family 13 member D-like; Macrophage mannose receptor 1-like protein 1; CD antigen CD206
Gene ID	4360
SwissProt ID	P22897.

Application

Dilution Ratio	WB: 1:500-1:1000 IHC: 1:50-1:100 ELISA: 1:10000
Molecular Weight	Calculated MW: 166 kDa; Observed MW: 170 kDa

Product Name: Mannose Receptor Rabbit Polyclonal Antibody
Catalog #: APRab00529



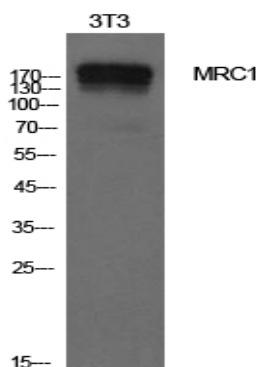
Background

Mediates the endocytosis of glycoproteins by macrophages. Binds both sulfated and non-sulfated polysaccharide chains. (Microbial infection) Acts as phagocytic receptor for bacteria, fungi and other pathogens. Acts as a receptor for Dengue virus envelope protein E (PubMed:18266465). Interacts with hepatitis B virus envelope protein (PubMed:19683778).

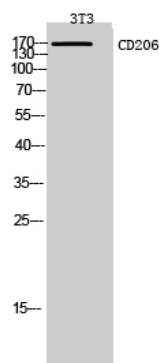
Research Area

Immunology

Image Data

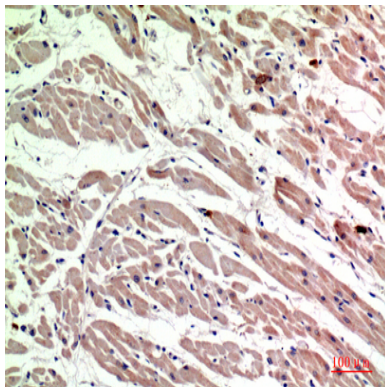


Western blot analysis of Mannose Receptor in NIH3T3 lysates using Mannose Receptor antibody.



Western blot analysis of Mannose Receptor in 3T3 lysates using CD206 antibody.

**Product Name: Mannose Receptor Rabbit Polyclonal
Antibody**
Catalog #: APRab00529



Immunohistochemistry analysis of paraffin-embedded Human heart using Mannose Receptor antibody. High-pressure and temperature Sodium Citrate pH 6.0 was used for antigen retrieval.

Note

For research use only.