

**Product Name: IL-36 beta Rabbit Polyclonal Antibody**  
**Catalog #: APRab00526**



## Summary

<b>Production Name</b>	IL-36 beta Rabbit Polyclonal Antibody
<b>Description</b>	Rabbit Polyclonal Antibody
<b>Host</b>	Rabbit
<b>Application</b>	WB,IHC-P,ELISA
<b>Reactivity</b>	Human

## Performance

<b>Conjugation</b>	Unconjugated
<b>Modification</b>	Unmodified
<b>Isotype</b>	IgG
<b>Clonality</b>	Polyclonal
<b>Form</b>	Liquid
<b>Storage</b>	Store at 4°C short term. Aliquot and store at -20°C long term. Avoid freeze/thaw cycles.
<b>Buffer</b>	Liquid in PBS containing 50% glycerol, 0.5% BSA and 0.02% sodium azide, pH 7.3.
<b>Purification</b>	Affinity Purification

## Immunogen

<b>Gene Name</b>	IL36B
<b>Alternative Names</b>	IL-36 beta; IL36B; IL1F8; IL1H2; Interleukin-36 beta; FIL1 eta; Interleukin-1 eta; IL-1 eta; Interleukin-1 family member 8; IL-1F8; Interleukin-1 homolog 2; IL-1H2
<b>Gene ID</b>	27177
<b>SwissProt ID</b>	Q9NZH7.

## Application

<b>Dilution Ratio</b>	WB: 1:500-1:1000 IHC: 1:50-1:100 ELISA: 1:10000
<b>Molecular Weight</b>	Calculated MW: 19 kDa; Observed MW: 19 kDa

## Background

**Product Name: IL-36 beta Rabbit Polyclonal Antibody**  
**Catalog #: APRab00526**

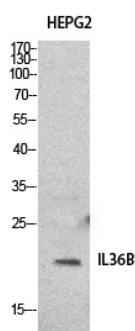


Cytokine that binds to and signals through the IL1RL2/IL-36R receptor which in turn activates NF-kappa-B and MAPK signaling pathways in target cells linked to a pro-inflammatory response.

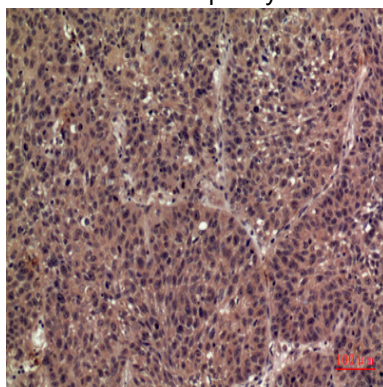
## Research Area

Immunology

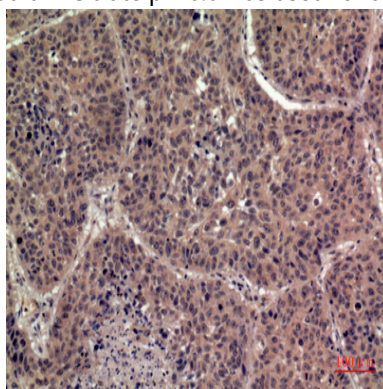
## Image Data



Western blot analysis of IL-36 beta in HepG2 lysates using IL-36 beta antibody.



Immunohistochemistry analysis of paraffin-embedded Human lung using IL-36 beta antibody. High-pressure and temperature Sodium Citrate pH 6.0 was used for antigen retrieval.



Immunohistochemistry analysis of paraffin-embedded Human lung using IL-36 beta antibody. High-pressure and

**Product Name: IL-36 beta Rabbit Polyclonal Antibody**  
**Catalog #: APRab00526**



---

temperature Sodium Citrate pH 6.0 was used for antigen retrieval.

**Note**

For research use only.