

**Product Name: Transferrin Rabbit Polyclonal Antibody**  
**Catalog #: APRab00518**



## Summary

<b>Production Name</b>	Transferrin Rabbit Polyclonal Antibody
<b>Description</b>	Rabbit Polyclonal Antibody
<b>Host</b>	Rabbit
<b>Application</b>	WB,IHC-P,ELISA
<b>Reactivity</b>	Human,Mouse,Rat

## Performance

<b>Conjugation</b>	Unconjugated
<b>Modification</b>	Unmodified
<b>Isotype</b>	IgG
<b>Clonality</b>	Polyclonal
<b>Form</b>	Liquid
<b>Storage</b>	Store at 4°C short term. Aliquot and store at -20°C long term. Avoid freeze/thaw cycles.
<b>Buffer</b>	Liquid in PBS containing 50% glycerol, 0.5% BSA and 0.02% sodium azide, pH 7.3.
<b>Purification</b>	Affinity Purification

## Immunogen

<b>Gene Name</b>	TF
<b>Alternative Names</b>	TF; Serotransferrin; Transferrin; Beta-1 metal-binding globulin; Siderophilin
<b>Gene ID</b>	7018
<b>SwissProt ID</b>	P02787.

## Application

<b>Dilution Ratio</b>	WB: 1:500-1:1000 IHC: 1:50-1:100 ELISA: 1:10000
<b>Molecular Weight</b>	Calculated MW: 77 kDa; Observed MW: 77 kDa

## Background

Transferrins are iron binding transport proteins which can bind two Fe<sup>3+</sup> ions in association with the binding of an anion,

**Product Name: Transferrin Rabbit Polyclonal Antibody**  
**Catalog #: APRab00518**

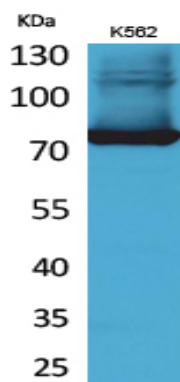


usually bicarbonate. It is responsible for the transport of iron from sites of absorption and heme degradation to those of storage and utilization. Serum transferrin may also have a further role in stimulating cell proliferation.

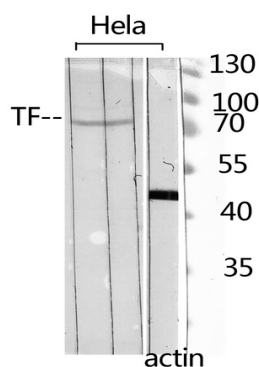
## Research Area

Cardiovascular

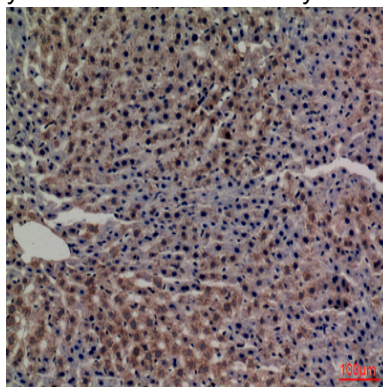
## Image Data



Western blot analysis of Transferrin in K562 lysates using Transferrin antibody.



Western blot analysis of Transferrin in HELA lysates using TF antibody.



Immunohistochemistry analysis of paraffin-embedded rat liver using Transferrin antibody. High-pressure and temperature Sodium Citrate pH 6.0 was used for antigen retrieval.

**Product Name: Transferrin Rabbit Polyclonal Antibody**  
**Catalog #: APRab00518**

---



**Note**

For research use only.