

Product Name: Rab26 Rabbit Polyclonal Antibody
Catalog #: APRab00511



Summary

Production Name	Rab26 Rabbit Polyclonal Antibody
Description	Rabbit Polyclonal Antibody
Host	Rabbit
Application	WB,IHC-P,ELISA
Reactivity	Human,Mouse,Rat

Performance

Conjugation	Unconjugated
Modification	Unmodified
Isotype	IgG
Clonality	Polyclonal
Form	Liquid
Storage	Store at 4°C short term. Aliquot and store at -20°C long term. Avoid freeze/thaw cycles.
Buffer	Liquid in PBS containing 50% glycerol, 0.5% BSA and 0.02% sodium azide, pH 7.3.
Purification	Affinity Purification

Immunogen

Gene Name	RAB26
Alternative Names	RAB26; Ras-related protein Rab-26
Gene ID	25837
SwissProt ID	Q9ULW5.

Application

Dilution Ratio	WB: 1:500-1:1000 IHC: 1:50-1:100 ELISA: 1:10000
Molecular Weight	Calculated MW: 28 kDa; Observed MW: 28 kDa

Background

The small GTPases Rab are key regulators of intracellular membrane trafficking, from the formation of transport vesicles to

Product Name: Rab26 Rabbit Polyclonal Antibody
Catalog #: APRab00511

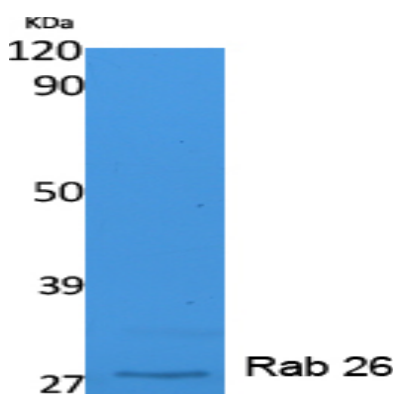


their fusion with membranes.

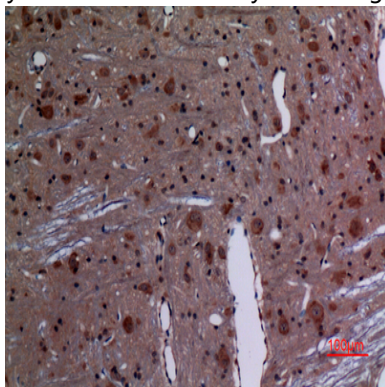
Research Area

Signal Transduction

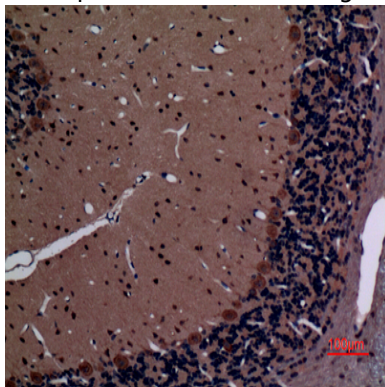
Image Data



Western blot analysis of Rab26 in K562 lysates using Rab 26 antibody.



Immunohistochemistry analysis of paraffin-embedded rat brain using Rab26 antibody. High-pressure and temperature Sodium Citrate pH 6.0 was used for antigen retrieval.



Immunohistochemistry analysis of paraffin-embedded rat brain using Rab26 antibody. High-pressure and temperature Sodium Citrate pH 6.0 was used for antigen retrieval.

Product Name: Rab26 Rabbit Polyclonal Antibody
Catalog #: APRab00511



Note

For research use only.