

Product Name: MIA2 Rabbit Polyclonal Antibody
Catalog #: APRab00506



Summary

Production Name	MIA2 Rabbit Polyclonal Antibody
Description	Rabbit Polyclonal Antibody
Host	Rabbit
Application	WB,IHC-P,ELISA
Reactivity	Human

Performance

Conjugation	Unconjugated
Modification	Unmodified
Isotype	IgG
Clonality	Polyclonal
Form	Liquid
Storage	Store at 4°C short term. Aliquot and store at -20°C long term. Avoid freeze/thaw cycles.
Buffer	Liquid in PBS containing 50% glycerol, 0.5% BSA and 0.02% sodium azide, pH 7.3.
Purification	Affinity Purification

Immunogen

Gene Name	MIA2
Alternative Names	Melanoma inhibitory activity protein 2
Gene ID	4253
SwissProt ID	Q96PC5.

Application

Dilution Ratio	WB: 1:500-1:1000 IHC: 1:50-1:100 ELISA: 1:10000
Molecular Weight	Calculated MW: 160 kDa; Observed MW: 65 kDa

Background

Plays a role in the transport of cargos that are too large to fit into COPII-coated vesicles and require specific mechanisms to

Product Name: MIA2 Rabbit Polyclonal Antibody
Catalog #: APRab00506

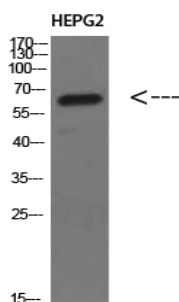


be incorporated into membrane-bound carriers and exported from the endoplasmic reticulum.

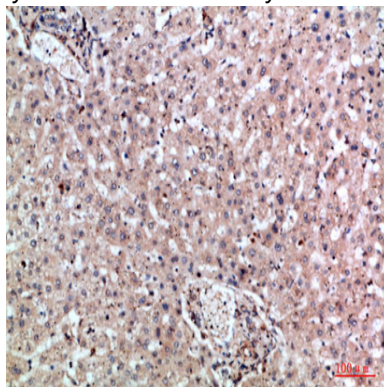
Research Area

Immunology

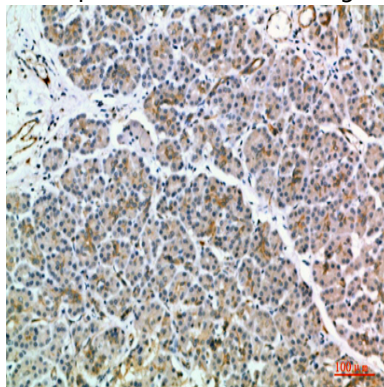
Image Data



Western blot analysis of MIA2 in HEPG2 lysates using MIA2 antibody.

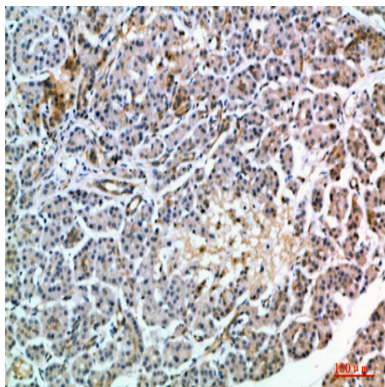


Immunohistochemistry analysis of paraffin-embedded Human liver using MIA2 antibody. High-pressure and temperature Sodium Citrate pH 6.0 was used for antigen retrieval.



Immunohistochemistry analysis of paraffin-embedded Human pancreas using MIA2 antibody. High-pressure and temperature Sodium Citrate pH 6.0 was used for antigen retrieval.

Product Name: MIA2 Rabbit Polyclonal Antibody
Catalog #: APRab00506



Immunohistochemistry analysis of paraffin-embedded Human pancreas using MIA2 antibody. High-pressure and temperature Sodium Citrate pH 6.0 was used for antigen retrieval.

Note

For research use only.