

**Product Name: C4A/B Rabbit Polyclonal Antibody**  
**Catalog #: APRab00500**



## Summary

<b>Production Name</b>	C4A/B Rabbit Polyclonal Antibody
<b>Description</b>	Rabbit Polyclonal Antibody
<b>Host</b>	Rabbit
<b>Application</b>	WB,IHC-P,ELISA
<b>Reactivity</b>	Human

## Performance

<b>Conjugation</b>	Unconjugated
<b>Modification</b>	Unmodified
<b>Isotype</b>	IgG
<b>Clonality</b>	Polyclonal
<b>Form</b>	Liquid
<b>Storage</b>	Store at 4°C short term. Aliquot and store at -20°C long term. Avoid freeze/thaw cycles.
<b>Buffer</b>	Liquid in PBS containing 50% glycerol, 0.5% BSA and 0.02% sodium azide, pH 7.3.
<b>Purification</b>	Affinity Purification

## Immunogen

<b>Gene Name</b>	C4A/C4B
<b>Alternative Names</b>	C4A; CO4; CPAMD2; Complement C4-A; Acidic complement C4; C3 and PZP-like alpha-2-macroglobulin domain-containing protein 2; C4B; CO4; CPAMD3; Complement C4-B; Basic complement C4; C3 and PZP-like alpha-2-macroglobulin domain-containing protein 3
<b>Gene ID</b>	720/721
<b>SwissProt ID</b>	P0C0L4/P0C0L5.

## Application

<b>Dilution Ratio</b>	WB: 1:500-1:1000 IHC: 1:50-1:100 ELISA: 1:10000
<b>Molecular Weight</b>	Calculated MW: 193 kDa; Observed MW: 180 kDa

**Product Name: C4A/B Rabbit Polyclonal Antibody**  
**Catalog #: APRab00500**

---



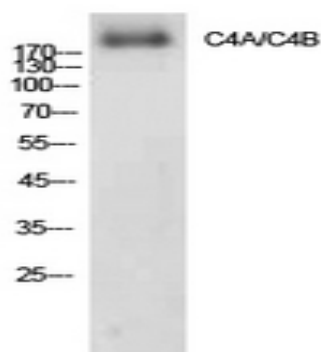
## Background

Induces the contraction of smooth muscle, increases vascular permeability and causes histamine release from mast cells and basophilic leukocytes.

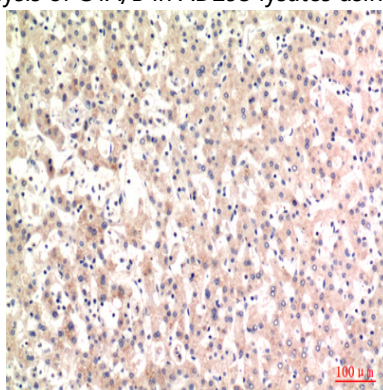
## Research Area

Immunology

## Image Data

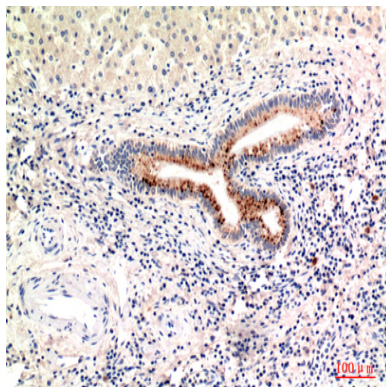


Western blot analysis of C4A/B in AD293 lysates using C4A/B antibody.

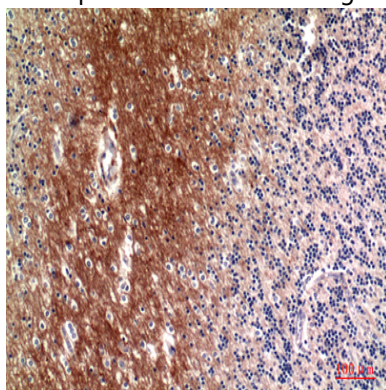


Immunohistochemistry analysis of paraffin-embedded Human liver using C4A/B antibody. High-pressure and temperature Sodium Citrate pH 6.0 was used for antigen retrieval.

**Product Name: C4A/B Rabbit Polyclonal Antibody**  
**Catalog #: APRab00500**



Immunohistochemistry analysis of paraffin-embedded Human liver using C4A/B antibody. High-pressure and temperature Sodium Citrate pH 6.0 was used for antigen retrieval.



Immunohistochemistry analysis of paraffin-embedded Human brain using C4A/B antibody. High-pressure and temperature Sodium Citrate pH 6.0 was used for antigen retrieval.

## **Note**

For research use only.