

**Product Name: IGFBP3 Rabbit Polyclonal Antibody**  
**Catalog #: APRab00498**



## Summary

<b>Production Name</b>	IGFBP3 Rabbit Polyclonal Antibody
<b>Description</b>	Rabbit Polyclonal Antibody
<b>Host</b>	Rabbit
<b>Application</b>	WB,IHC-P,ELISA
<b>Reactivity</b>	Human,Mouse,Rat

## Performance

<b>Conjugation</b>	Unconjugated
<b>Modification</b>	Unmodified
<b>Isotype</b>	IgG
<b>Clonality</b>	Polyclonal
<b>Form</b>	Liquid
<b>Storage</b>	Store at 4°C short term. Aliquot and store at -20°C long term. Avoid freeze/thaw cycles.
<b>Buffer</b>	Liquid in PBS containing 50% glycerol, 0.5% BSA and 0.02% sodium azide, pH 7.3.
<b>Purification</b>	Affinity Purification

## Immunogen

<b>Gene Name</b>	IGFBP3
<b>Alternative Names</b>	IGFBP3; IBP3; Insulin-like growth factor-binding protein 3; IBP-3; IGF-binding protein 3; IGFBP-3
<b>Gene ID</b>	3486
<b>SwissProt ID</b>	P17936.

## Application

<b>Dilution Ratio</b>	WB: 1:500-1:1000 IHC: 1:50-1:100 ELISA: 1:10000
<b>Molecular Weight</b>	Calculated MW: 32 kDa; Observed MW: 32 kDa

## Background

**Product Name: IGFBP3 Rabbit Polyclonal Antibody**  
**Catalog #: APRab00498**

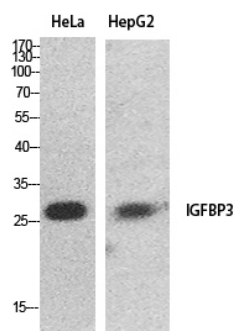


IGF-binding proteins prolong the half-life of the IGFs and have been shown to either inhibit or stimulate the growth promoting effects of the IGFs on cell culture.

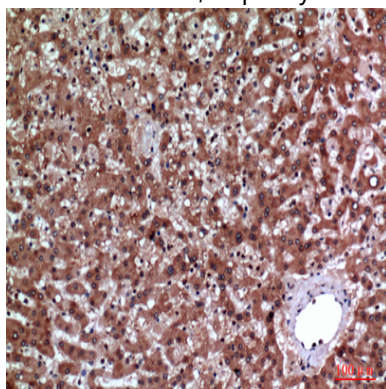
## Research Area

Cell Biology

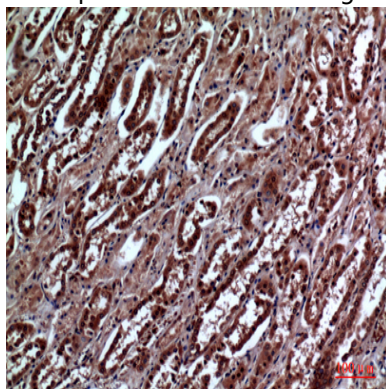
## Image Data



Western blot analysis of IGFBP3 in HeLa, HepG2 lysates using IGFBP3 antibody.



Immunohistochemistry analysis of paraffin-embedded Human liver using IGFBP3 antibody. High-pressure and temperature Sodium Citrate pH 6.0 was used for antigen retrieval.

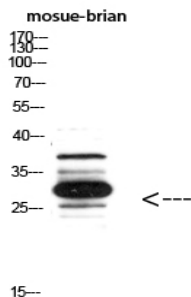


Immunohistochemistry analysis of paraffin-embedded Human kidney using IGFBP3 antibody. High-pressure and

**Product Name: IGFBP3 Rabbit Polyclonal Antibody**  
**Catalog #: APRab00498**



temperature Sodium Citrate pH 6.0 was used for antigen retrieval.



Western blot analysis of IGFBP3 in mouse brain lysates using IGFBP3 antibody.

## Note

For research use only.