

Product Name: GPR75 Rabbit Polyclonal Antibody
Catalog #: APRab00456



Summary

Production Name	GPR75 Rabbit Polyclonal Antibody
Description	Rabbit Polyclonal Antibody
Host	Rabbit
Application	WB, ICC/IF, ELISA
Reactivity	Human, Mouse

Performance

Conjugation	Unconjugated
Modification	Unmodified
Isotype	IgG
Clonality	Polyclonal
Form	Liquid
Storage	Store at 4°C short term. Aliquot and store at -20°C long term. Avoid freeze/thaw cycles.
Buffer	Liquid in PBS containing 50% glycerol, 0.5% BSA and 0.02% sodium azide, pH 7.3.
Purification	Affinity Purification

Immunogen

Gene Name	GPR75
Alternative Names	Probable G-protein coupled receptor 75
Gene ID	10936
SwissProt ID	O95800.

Application

Dilution Ratio	WB: 1:500-1:1000 IF: 1:50-1:200 ELISA: 1:10000
Molecular Weight	Calculated MW: 59 kDa; Observed MW: 59 kDa

Background

G protein-coupled receptor that is activated by the chemokine CCL5/RANTES.

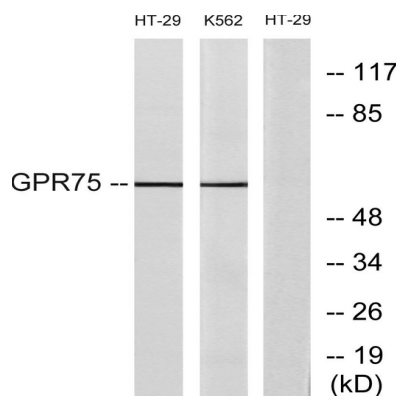
Product Name: GPR75 Rabbit Polyclonal Antibody
Catalog #: APRab00456



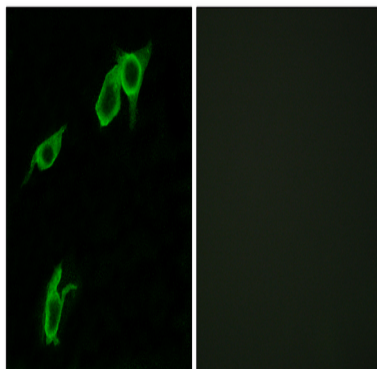
Research Area

Signal Transduction

Image Data



Western blot analysis of GPR75 in HT-29 and K562 lysates using GPR75 antibody. The lane on the right is blocked with the synthesized peptide.



Immunofluorescence analysis of GPR75 in LOVO using GPR75 antibody. The picture on the right is blocked using the synthesized peptide.

Note

For research use only.