

**Product Name: Toll-Like Receptor 6 Rabbit Polyclonal Antibody**  
**Catalog #: APRab00445**

---



## Summary

<b>Production Name</b>	Toll-Like Receptor 6 Rabbit Polyclonal Antibody
<b>Description</b>	Rabbit Polyclonal Antibody
<b>Host</b>	Rabbit
<b>Application</b>	IHC-P
<b>Reactivity</b>	Human,Mouse,Rat

## Performance

<b>Conjugation</b>	Unconjugated
<b>Modification</b>	Unmodified
<b>Isotype</b>	IgG
<b>Clonality</b>	Polyclonal
<b>Form</b>	Liquid
<b>Storage</b>	Store at 4°C short term. Aliquot and store at -20°C long term. Avoid freeze/thaw cycles.
<b>Buffer</b>	Liquid in PBS containing 50% glycerol, 0.5% BSA and 0.02% sodium azide, pH 7.3.
<b>Purification</b>	Affinity Purification

## Immunogen

<b>Gene Name</b>	TLR6
<b>Alternative Names</b>	Toll-like receptor 6; CD286
<b>Gene ID</b>	10333
<b>SwissProt ID</b>	Q9Y2C9.

## Application

<b>Dilution Ratio</b>	IHC: 1:50-1:100
<b>Molecular Weight</b>	-

## Background

The protein encoded by this gene is a member of the Toll-like receptor (TLR) family which plays a fundamental role in

**Product Name: Toll-Like Receptor 6 Rabbit Polyclonal Antibody**  
**Catalog #: APRab00445**

---

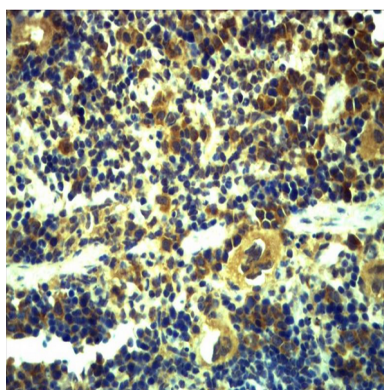


pathogen recognition and activation of innate immunity. TLRs are highly conserved from Drosophila to humans and share structural and functional similarities. They recognize pathogen-associated molecular patterns (PAMPs) that are expressed on infectious agents, and mediate the production of cytokines necessary for the development of effective immunity. The various TLRs exhibit different patterns of expression. This receptor functionally interacts with toll-like receptor 2 to mediate cellular response to bacterial lipoproteins. A Ser249Pro polymorphism in the extracellular domain of the encoded protein may be associated with an increased of asthma in some populations.

## **Research Area**

Immunology

## **Image Data**



Immunohistochemistry analysis of paraffin-embedded mouse Spleen Tissue using Toll-Like Receptor 6 antibody. High-pressure and temperature Sodium Citrate pH 6.0 was used for antigen retrieval.

## **Note**

For research use only.