

Product Name: NCAPG2 Rabbit Polyclonal Antibody
Catalog #: APRab00426



Summary

Production Name	NCAPG2 Rabbit Polyclonal Antibody
Description	Rabbit Polyclonal Antibody
Host	Rabbit
Application	IHC-P,ELISA
Reactivity	Human

Performance

Conjugation	Unconjugated
Modification	Unmodified
Isotype	IgG
Clonality	Polyclonal
Form	Liquid
Storage	Store at 4°C short term. Aliquot and store at -20°C long term. Avoid freeze/thaw cycles.
Buffer	Liquid in PBS containing 50% glycerol, 0.5% BSA and 0.02% sodium azide, pH 7.3.
Purification	Affinity Chromatography

Immunogen

Gene Name	NCAPG2
Alternative Names	MTB; CAPG2; LUZP5; CAP-G2; hCAP-G2
Gene ID	54892
SwissProt ID	Q86XI2.

Application

Dilution Ratio	IHC: 1:50-1:100 ELISA: 1:10000
Molecular Weight	-

Background

Regulatory subunit of the condensin-2 complex, a complex which establishes mitotic chromosome architecture and is involved in physical rigidity of the chromatid axis.

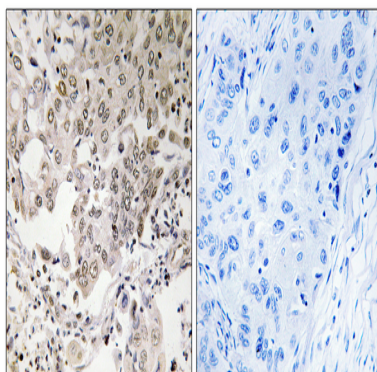
Product Name: NCAPG2 Rabbit Polyclonal Antibody
Catalog #: APRab00426



Research Area

Cell Biology

Image Data



Immunohistochemistry analysis of paraffin-embedded Human lung carcinoma, using NCAPG2 antibody. High-pressure and temperature Sodium Citrate pH 6.0 was used for antigen retrieval. Sample with blocking peptide on the right.

Note

For research use only.