

Product Name: STEAP2 Rabbit Polyclonal Antibody
Catalog #: APRab00421



Summary

| | |
|------------------------|-----------------------------------|
| Production Name | STEAP2 Rabbit Polyclonal Antibody |
| Description | Rabbit Polyclonal Antibody |
| Host | Rabbit |
| Application | IHC-F,IHC-P,ICC/IF,ELISA |
| Reactivity | Human,Mouse |

Performance

| | |
|---------------------|--|
| Conjugation | Unconjugated |
| Modification | Unmodified |
| Isotype | IgG |
| Clonality | Polyclonal |
| Form | Liquid |
| Storage | Store at 4°C short term. Aliquot and store at -20°C long term. Avoid freeze/thaw cycles. |
| Buffer | Liquid in PBS containing 50% glycerol, 0.5% BSA and 0.02% sodium azide, pH 7.3. |
| Purification | Affinity Chromatography |

Immunogen

| | |
|--------------------------|--|
| Gene Name | STEAP2 |
| Alternative Names | STEAP2; PCANAP1; STAMP1; Metalloreductase STEAP2; Prostate cancer-associated protein 1; Protein up-regulated in metastatic prostate cancer; PUMPCn; Six-transmembrane epithelial antigen of prostate 2; SixTransMembrane protein of prostate 1 |
| Gene ID | 261729 |
| SwissProt ID | Q8NFT2. |

Application

| | |
|-------------------------|---|
| Dilution Ratio | IHC: 1:50-1:100 IF: 1:50-1:200 ELISA: 1:10000 |
| Molecular Weight | - |

Product Name: STEAP2 Rabbit Polyclonal Antibody
Catalog #: APRab00421



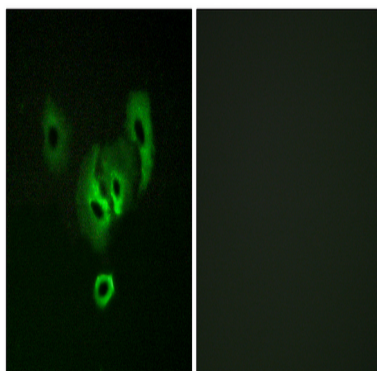
Background

Metalloreductase that has the ability to reduce both Fe^{3+} to Fe^{2+} and Cu^{2+} to Cu^{1+} . Uses NAD^{+} as acceptor .

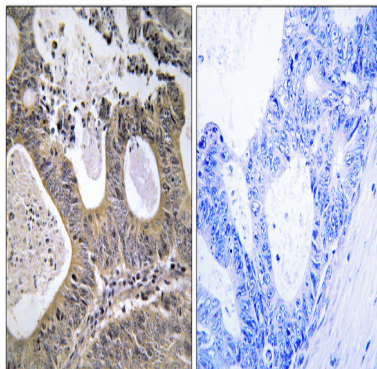
Research Area

Cancer

Image Data



Immunofluorescence analysis of STEAP2 in A549 cells using STEAP2 antibody. Sample with blocking peptide on the right.



Immunohistochemical analysis of paraffin-embedded Human tonsils using STEAP2 antibody. Sample with blocking peptide on the right. High-pressure and temperature Sodium Citrate pH 6.0 was used for antigen retrieval.

Note

For research use only.