

Product Name: Myosin Phosphatase Rabbit Polyclonal Antibody
Catalog #: APRab00383

Summary

Production Name	Myosin Phosphatase Rabbit Polyclonal Antibody
Description	Rabbit Polyclonal Antibody
Host	Rabbit
Application	WB,IHC-P,ELISA
Reactivity	Human,Mouse,Rat,Monkey

Performance

Conjugation	Unconjugated
Modification	Unmodified
Isotype	IgG
Clonality	Polyclonal
Form	Liquid
Storage	Store at 4°C short term. Aliquot and store at -20°C long term. Avoid freeze/thaw cycles.
Buffer	Liquid in PBS containing 50% glycerol, 0.5% BSA and 0.02% sodium azide, pH 7.3.
Purification	Affinity Chromatography

Immunogen

Gene Name	PPP1R12A
Alternative Names	PPP1R12A; MBS; MYPT1; Protein phosphatase 1 regulatory subunit 12A; Myosin phosphatase-targeting subunit 1; Myosin phosphatase target subunit 1; Protein phosphatase myosin-binding subunit
Gene ID	4659
SwissProt ID	O14974.

Application

Dilution Ratio	WB: 1:500-1:1000 IHC: 1:50-1:100 ELISA: 1:10000
Molecular Weight	Calculated MW: 115 kDa; Observed MW: 140 kDa

Product Name: Myosin Phosphatase Rabbit Polyclonal Antibody
Catalog #: APRab00383



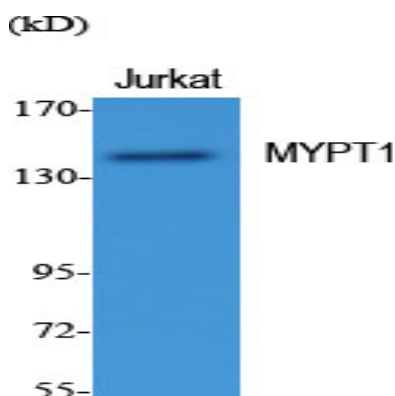
Background

Key regulator of protein phosphatase 1C (PPP1C). Mediates binding to myosin. As part of the PPP1C complex, involved in dephosphorylation of PLK1. Capable of inhibiting HIF1AN-dependent suppression of HIF1A activity.

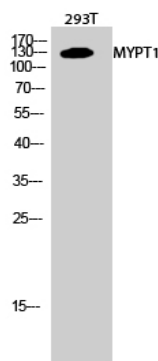
Research Area

Signal Transduction

Image Data

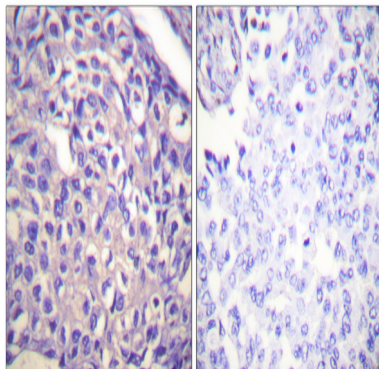


Western blot analysis of Myosin Phosphatase in various lysates using Myosin Phosphatase antibody.

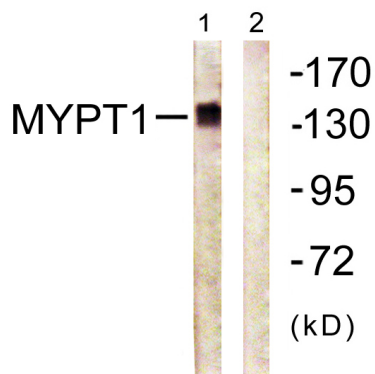


Western blot analysis of Myosin Phosphatase in 293T lysates using MYPT1 antibody.

Product Name: Myosin Phosphatase Rabbit Polyclonal Antibody
Catalog #: APRab00383



Immunohistochemistry analysis of paraffin-embedded Human breast carcinoma tissue using MYPT1 antibody. High-pressure and temperature Sodium Citrate pH 6.0 was used for antigen retrieval. Sample with blocking peptide on the right.



Western blot analysis of Myosin Phosphatase in COS7 lysates using Myosin Phosphatase antibody. The lane on the right is blocked with the synthesized peptide.

Note

For research use only.