

Product Name: Fibronectin Rabbit Polyclonal Antibody
Catalog #: APRab00380



Summary

Production Name	Fibronectin Rabbit Polyclonal Antibody
Description	Rabbit Polyclonal Antibody
Host	Rabbit
Application	WB,IHC-P,ELISA
Reactivity	Human,Mouse,Rat

Performance

Conjugation	Unconjugated
Modification	Unmodified
Isotype	IgG
Clonality	Polyclonal
Form	Liquid
Storage	Store at 4°C short term. Aliquot and store at -20°C long term. Avoid freeze/thaw cycles.
Buffer	Liquid in PBS containing 50% glycerol, 0.5% BSA and 0.02% sodium azide, pH 7.3.
Purification	Affinity Chromatography

Immunogen

Gene Name	FN1
Alternative Names	FN1; FN; Fibronectin; FN; Cold-insoluble globulin; CIG
Gene ID	2335
SwissProt ID	P02751.

Application

Dilution Ratio	WB: 1:500-1:1000 IHC: 1:50-1:100 ELISA: 1:10000
Molecular Weight	Calculated MW: 272 kDa; Observed MW: 260 kDa

Background

FN1 Fibronectins bind cell surfaces and various compounds including collagen, fibrin, heparin, DNA, and actin. Fibronectins

Product Name: Fibronectin Rabbit Polyclonal Antibody
Catalog #: APRab00380

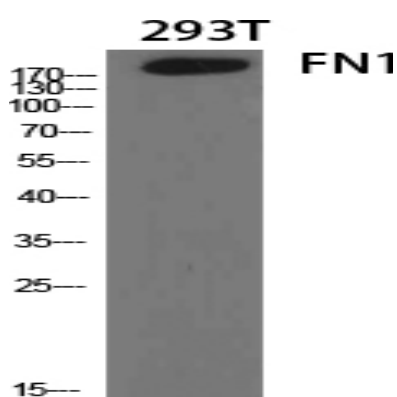


are involved in cell adhesion, cell motility, opsonization, wound healing, and maintenance of cell shape. Mostly heterodimers or multimers of alternatively spliced variants, connected by 2 disulfide bonds near the carboxyl ends; to a lesser extent homodimers.

Research Area

Cardiovascular

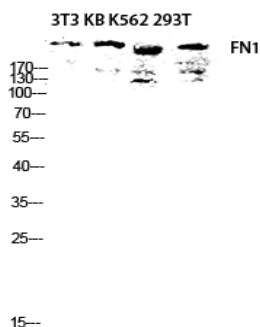
Image Data



Western blot analysis of Fibronectin in various lysates using Fibronectin antibody.

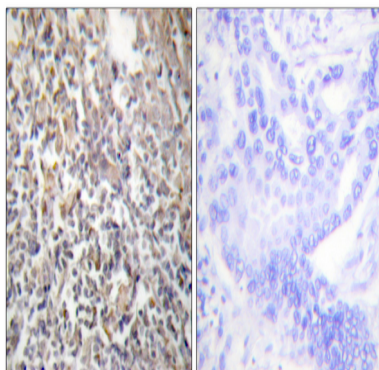


Western blot analysis of Fibronectin in HeLa lysates using FN1 antibody.

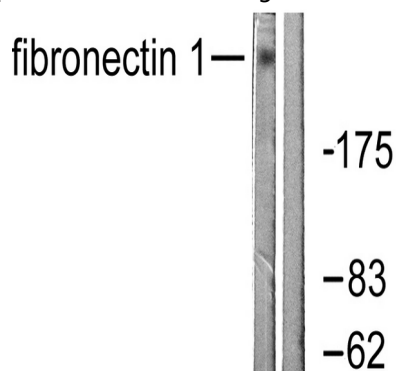


Western blot analysis of Fibronectin in 3T3 KB K562 293T lysates using FN1 antibody.

Product Name: Fibronectin Rabbit Polyclonal Antibody
Catalog #: APRab00380



Immunohistochemistry analysis of paraffin-embedded Human thyroid gland tissue using Fibronectin 1 antibody. High-pressure and temperature Sodium Citrate pH 6.0 was used for antigen retrieval. Sample with blocking peptide on the right.



Western blot analysis of Fibronectins in HeLa lysates using Fibronectin 1 antibody. The lane on the right is blocked with the synthesized peptide.

Note

For research use only.