

Product Name: Glycophorin C Rabbit Polyclonal Antibody
Catalog #: APRab00329

Summary

Production Name	Glycophorin C Rabbit Polyclonal Antibody
Description	Rabbit Polyclonal Antibody
Host	Rabbit
Application	WB,IHC-P,ICC/IF,FC,IP
Reactivity	Human

Performance

Conjugation	Unconjugated
Modification	Unmodified
Isotype	IgG
Clonality	Polyclonal
Form	Liquid
Storage	Store at 4°C short term. Aliquot and store at -20°C long term. Avoid freeze/thaw cycles.
Buffer	Rabbit IgG in phosphate buffered saline , pH 7.4, 150mM NaCl, 0.02% sodium azide and 50% glycerol.
Purification	Affinity Chromatography

Immunogen

Gene Name	GYPC
Alternative Names	GYPC; CD236; CD236R; GE; GPC; GYPD
Gene ID	2995
SwissProt ID	P04921.

Application

Dilution Ratio	WB: 1:500-1:1000 IHC: 1:50-1:100 IF: 1:50-1:200 IP: 1:20 FC: 1:50-1:100
Molecular Weight	Calculated MW: 14 kDa; Observed MW: 39 kDa

Background

Product Name: Glycophorin C Rabbit Polyclonal Antibody
Catalog #: AP Rab00329

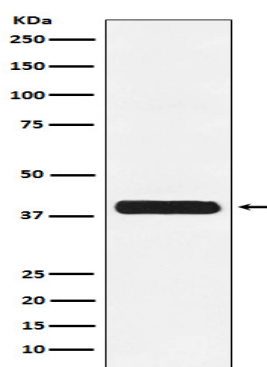


This protein is a minor sialoglycoprotein in human erythrocyte membranes. The blood group Gerbich antigens and receptors for Plasmodium falciparum merozoites are most likely located within the extracellular domain.

Research Area

Cardiovascular

Image Data



Western blot analysis of Glycophorin C in K562 lysates using Glycophorin C antibody.

Note

For research use only.