

Product Name: Geminin Rabbit Polyclonal Antibody
Catalog #: APRab00322



Summary

Production Name	Geminin Rabbit Polyclonal Antibody
Description	Rabbit Polyclonal Antibody
Host	Rabbit
Application	WB,IHC-P,ICC/IF
Reactivity	Human

Performance

Conjugation	Unconjugated
Modification	Unmodified
Isotype	IgG
Clonality	Polyclonal
Form	Liquid
Storage	Store at 4°C short term. Aliquot and store at -20°C long term. Avoid freeze/thaw cycles.
Buffer	Rabbit IgG in phosphate buffered saline , pH 7.4, 150mM NaCl, 0.02% sodium azide and 50% glycerol.
Purification	Affinity Chromatography

Immunogen

Gene Name	GMNN
Alternative Names	Gem; Geminin; GMNN
Gene ID	51053
SwissProt ID	O75496.

Application

Dilution Ratio	WB: 1:500-1:1000 IHC: 1:50-1:100 IF: 1:50-1:200
Molecular Weight	Calculated MW: 24 kDa; Observed MW: 30 kDa

Background

Inhibits DNA replication by preventing the incorporation of MCM complex into prereplication complex (pre-RC). It is

Product Name: Geminin Rabbit Polyclonal Antibody
Catalog #: APRab00322

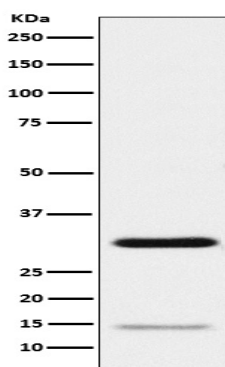


degraded during the mitotic phase of the cell cycle. Its destruction at the metaphase-anaphase transition permits replication in the succeeding cell cycle.

Research Area

Epigenetics and Nuclear Signaling

Image Data



Western blot analysis of Geminin in HeLa lysates using Geminin antibody.

Note

For research use only.