

**Product Name: Wnt2b Rabbit Polyclonal Antibody**  
**Catalog #: APRab00298**



## Summary

<b>Production Name</b>	Wnt2b Rabbit Polyclonal Antibody
<b>Description</b>	Rabbit Polyclonal Antibody
<b>Host</b>	Rabbit
<b>Application</b>	WB,ICC/IF,FC
<b>Reactivity</b>	Human,Mouse,Rat

## Performance

<b>Conjugation</b>	Unconjugated
<b>Modification</b>	Unmodified
<b>Isotype</b>	IgG
<b>Clonality</b>	Polyclonal
<b>Form</b>	Liquid
<b>Storage</b>	Store at 4°C short term. Aliquot and store at -20°C long term. Avoid freeze/thaw cycles.
<b>Buffer</b>	Rabbit IgG in phosphate buffered saline , pH 7.4, 150mM NaCl, 0.02% sodium azide and 50% glycerol.
<b>Purification</b>	Affinity Chromatography

## Immunogen

<b>Gene Name</b>	WNT2B
<b>Alternative Names</b>	WNT13; Wnt2b; XWNT2
<b>Gene ID</b>	7482
<b>SwissProt ID</b>	Q93097.

## Application

<b>Dilution Ratio</b>	WB: 1:500-1:1000 IF: 1:50-1:200 FC: 1:50-1:100
<b>Molecular Weight</b>	Calculated MW: 44 kDa; Observed MW: 44 kDa

## Background

Ligand for members of the frizzled family of seven transmembrane receptors. Probable developmental protein. May be a

**Product Name: Wnt2b Rabbit Polyclonal Antibody**  
**Catalog #: APRab00298**

---

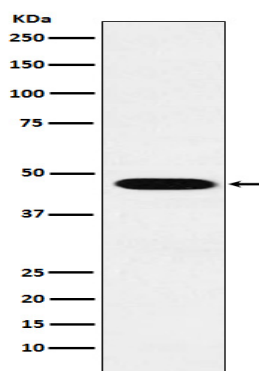


signaling molecule which affects the development of discrete regions of tissues. Is likely to signal over only few cell diameters.

## Research Area

Stem Cells

## Image Data



Western blot analysis of Wnt2b in HepG2 lysates using Wnt2b antibody.

## Note

For research use only.