

**Product Name: ALDOA Rabbit Polyclonal Antibody**  
**Catalog #: APRab00286**



## Summary

<b>Production Name</b>	ALDOA Rabbit Polyclonal Antibody
<b>Description</b>	Rabbit Polyclonal Antibody
<b>Host</b>	Rabbit
<b>Application</b>	WB,IHC-P,ICC/IF
<b>Reactivity</b>	Human,Mouse,Rat

## Performance

<b>Conjugation</b>	Unconjugated
<b>Modification</b>	Unmodified
<b>Isotype</b>	IgG
<b>Clonality</b>	Polyclonal
<b>Form</b>	Liquid
<b>Storage</b>	Store at 4°C short term. Aliquot and store at -20°C long term. Avoid freeze/thaw cycles.
<b>Buffer</b>	Rabbit IgG in phosphate buffered saline , pH 7.4, 150mM NaCl, 0.02% sodium azide and 50% glycerol.
<b>Purification</b>	Affinity Chromatography

## Immunogen

<b>Gene Name</b>	ALDOA
<b>Alternative Names</b>	ALDOA; ALDA; Fructose-bisphosphate aldolase A; Lung cancer antigen NY-LU-1; Muscle-type aldolase
<b>Gene ID</b>	226
<b>SwissProt ID</b>	P04075.

## Application

<b>Dilution Ratio</b>	WB: 1:500-1:1000 IHC: 1:50-1:100 IF: 1:50-1:200
<b>Molecular Weight</b>	Calculated MW: 39 kDa; Observed MW: 39 kDa

## Background

**Product Name: ALDOA Rabbit Polyclonal Antibody**  
**Catalog #: APRab00286**

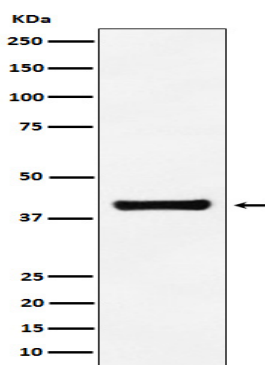


Plays a key role in glycolysis and gluconeogenesis. In addition, may also function as scaffolding protein.

## Research Area

Signal Transduction

## Image Data



Western blot analysis of Aldolase in A549 lysates using ALDOA antibody.

## Note

For research use only.