

**Product Name: OTX1/2 Rabbit Polyclonal Antibody**  
**Catalog #: APRab00250**



## Summary

<b>Production Name</b>	OTX1/2 Rabbit Polyclonal Antibody
<b>Description</b>	Rabbit Polyclonal Antibody
<b>Host</b>	Rabbit
<b>Application</b>	WB,IHC-P,ChIP
<b>Reactivity</b>	Human,Mouse,Rat

## Performance

<b>Conjugation</b>	Unconjugated
<b>Modification</b>	Unmodified
<b>Isotype</b>	IgG
<b>Clonality</b>	Polyclonal
<b>Form</b>	Liquid
<b>Storage</b>	Store at 4°C short term. Aliquot and store at -20°C long term. Avoid freeze/thaw cycles.
<b>Buffer</b>	Rabbit IgG in phosphate buffered saline , pH 7.4, 150mM NaCl, 0.02% sodium azide and 50% glycerol.
<b>Purification</b>	Affinity Chromatography

## Immunogen

<b>Gene Name</b>	OTX1/OTX2 Homeobox protein OTX1; Homeobox protein OTX2; Orthodenticle 1; Orthodenticle 2;
<b>Alternative Names</b>	Orthodenticle homeobox 1; Orthodenticle homeobox 2; Orthodenticle1; Orthodenticle2; otx1; otx2
<b>Gene ID</b>	5013/5015
<b>SwissProt ID</b>	P32242/P32243.

## Application

<b>Dilution Ratio</b>	WB: 1:500-1:1000 IHC: 1:50-1:100 ChIP: 1:20
<b>Molecular Weight</b>	Calculated MW: 37 kDa; Observed MW: 32 kDa

**Product Name: OTX1/2 Rabbit Polyclonal Antibody**  
**Catalog #: APRab00250**



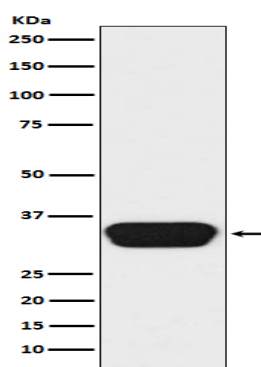
## Background

Probably plays a role in the development of the brain and the sense organs. Can bind to the BCD target sequence (BTS): 5'-TCTAATCCC-3'.

## Research Area

Neuroscience

## Image Data



Western blot analysis of Otx1/2 in Y79 lysates using OTX1/2 antibody.

## Note

For research use only.