

Product Name: Placental Alkaline Phosphatase Rabbit Polyclonal Antibody
Catalog #: APRab00243



Summary

Production Name	Placental Alkaline Phosphatase Rabbit Polyclonal Antibody
Description	Rabbit Polyclonal Antibody
Host	Rabbit
Application	WB,IHC-P,ICC/IF
Reactivity	Human

Performance

Conjugation	Unconjugated
Modification	Unmodified
Isotype	IgG
Clonality	Polyclonal
Form	Liquid
Storage	Store at 4°C short term. Aliquot and store at -20°C long term. Avoid freeze/thaw cycles.
Buffer	Rabbit IgG in phosphate buffered saline , pH 7.4, 150mM NaCl, 0.02% sodium azide and 50% glycerol.
Purification	Affinity Chromatography

Immunogen

Gene Name	ALPP
Alternative Names	ALPP; PLAP; Alkaline phosphatase; placental type; Alkaline phosphatase Regan isozyme; Placental alkaline phosphatase 1; PLAP-1
Gene ID	250
SwissProt ID	P05187.

Application

Dilution Ratio	WB: 1:500-1:1000 IHC: 1:50-1:100 IF: 1:50-1:200
Molecular Weight	Calculated MW: 58 kDa; Observed MW: 70 kDa

**Product Name: Placental Alkaline Phosphatase Rabbit
Polyclonal Antibody**
Catalog #: APRab00243



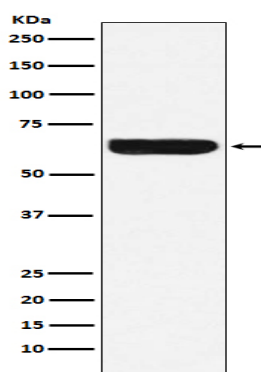
Background

PLAP may assist in guiding migratory cells and transporting specific molecules, such as fatty acids and immunoglobulins, across the plasma membrane. The three tissue-specific APs identified in human, PLAP, germ cell AP (GCAP) and intestinal AP, are 90-98% homologous and their genes are clustered on chromosome 2q.

Research Area

Tags & Cell Markers

Image Data



Western blot analysis of Placental alkaline phosphatase (PLAP) in HeLa lysates using Placental Alkaline Phosphatase antibody.

Note

For research use only.