

Product Name: GABARAPL2 Rabbit Polyclonal Antibody
Catalog #: APRab00238



Summary

Production Name	GABARAPL2 Rabbit Polyclonal Antibody
Description	Rabbit Polyclonal Antibody
Host	Rabbit
Application	WB
Reactivity	Human,Mouse,Rat

Performance

Conjugation	Unconjugated
Modification	Unmodified
Isotype	IgG
Clonality	Polyclonal
Form	Liquid
Storage	Store at 4°C short term. Aliquot and store at -20°C long term. Avoid freeze/thaw cycles.
Buffer	Rabbit IgG in phosphate buffered saline , pH 7.4, 150mM NaCl, 0.02% sodium azide and 50% glycerol.
Purification	Affinity Chromatography

Immunogen

Gene Name	GABARAPL2
Alternative Names	ATG8; GEF2; ATG8C; GEF-2; GATE16; GATE-16
Gene ID	11345
SwissProt ID	P60520.

Application

Dilution Ratio	WB: 1:500-1:1000
Molecular Weight	Calculated MW: 14 kDa; Observed MW: 14 kDa

Background

Involved in intra-Golgi traffic. Modulates intra-Golgi transport through coupling between NSF activity and SNAREs

Product Name: GABARAPL2 Rabbit Polyclonal Antibody
Catalog #: APRab00238

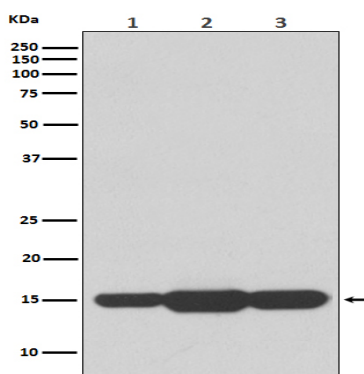


activation. It first stimulates the ATPase activity of NSF which in turn stimulates the association with GOSR1.

Research Area

Signal Transduction

Image Data



Western blot analysis of GABARAPL2 in (1) HeLa lysates; (2) mouse spleen lysates; (3) rat brain lysates using GABARAPL2 antibody.

Note

For research use only.