

**Product Name: Aquaporin 1 Rabbit Polyclonal Antibody**  
**Catalog #: APRab00171**



## Summary

<b>Production Name</b>	Aquaporin 1 Rabbit Polyclonal Antibody
<b>Description</b>	Rabbit Polyclonal Antibody
<b>Host</b>	Rabbit
<b>Application</b>	WB,IHC-P,ICC/IF
<b>Reactivity</b>	Human,Mouse,Rat

## Performance

<b>Conjugation</b>	Unconjugated
<b>Modification</b>	Unmodified
<b>Isotype</b>	IgG
<b>Clonality</b>	Polyclonal
<b>Form</b>	Liquid
<b>Storage</b>	Store at 4°C short term. Aliquot and store at -20°C long term. Avoid freeze/thaw cycles.
<b>Buffer</b>	Rabbit IgG in phosphate buffered saline , pH 7.4, 150mM NaCl, 0.02% sodium azide and 50% glycerol.
<b>Purification</b>	Affinity Chromatography

## Immunogen

<b>Gene Name</b>	AQP1
<b>Alternative Names</b>	AQP1; CHIP28; Aquaporin-1; AQP-1; Aquaporin-CHIP; Urine water channel; Water channel protein for red blood cells and kidney proximal tubule
<b>Gene ID</b>	358
<b>SwissProt ID</b>	P29972.

## Application

<b>Dilution Ratio</b>	WB: 1:500-1:1000 IHC: 1:50-1:100 IF: 1:50-1:200
<b>Molecular Weight</b>	Calculated MW: 29 kDa; Observed MW: 29 kDa

## Background

**Product Name: Aquaporin 1 Rabbit Polyclonal Antibody**  
**Catalog #: APRab00171**

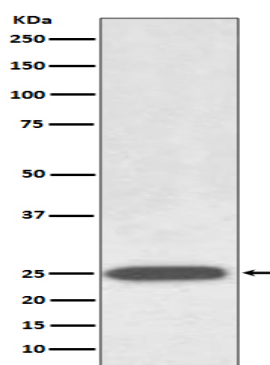


Forms a water-specific channel that provides the plasma membranes of red cells and kidney proximal tubules with high permeability to water, thereby permitting water to move in the direction of an osmotic gradient.

## Research Area

Cell Biology

## Image Data



Western blot analysis of AQP1 in Human fetal kidney lysates using Aquaporin 1 antibody.

## Note

For research use only.