

Product Name: BMP11 Rabbit Polyclonal Antibody
Catalog #: APRab00148



Summary

Production Name	BMP11 Rabbit Polyclonal Antibody
Description	Rabbit Polyclonal Antibody
Host	Rabbit
Application	WB,IHC-P,ICC/IF
Reactivity	Human,Rat

Performance

Conjugation	Unconjugated
Modification	Unmodified
Isotype	IgG
Clonality	Polyclonal
Form	Liquid
Storage	Store at 4°C short term. Aliquot and store at -20°C long term. Avoid freeze/thaw cycles.
Buffer	Rabbit IgG in phosphate buffered saline , pH 7.4, 150mM NaCl, 0.02% sodium azide and 50% glycerol.
Purification	Affinity Chromatography

Immunogen

Gene Name	GDF11
Alternative Names	GDF11; BMP11; Bone morphogenetic protein 11; GDF-11; BMP-11
Gene ID	10220
SwissProt ID	O95390.

Application

Dilution Ratio	WB: 1:500-1:1000 IHC: 1:50-1:100 IF: 1:50-1:200
Molecular Weight	Calculated MW: 45 kDa; Observed MW: 45 kDa

Background

Secreted signal that acts globally to specify positional identity along the anterior/posterior axis during development. Play

Product Name: BMP11 Rabbit Polyclonal Antibody
Catalog #: APRab00148

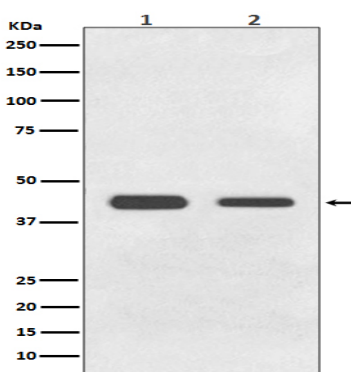


critical roles in patterning both mesodermal and neural tissues and in establishing the skeletal pattern.

Research Area

Signal Transduction

Image Data



Western blot analysis of BMP11 in (1) HeLa lysates; (2) C6 lysates using BMP11 antibody.

Note

For research use only.