

Product Name: Cytochrome C Rabbit Polyclonal Antibody
Catalog #: APRab00095

Summary

Production Name	Cytochrome C Rabbit Polyclonal Antibody
Description	Rabbit Polyclonal Antibody
Host	Rabbit
Application	WB,IHC-P,ICC/IF,IP
Reactivity	Human,Mouse,Rat

Performance

Conjugation	Unconjugated
Modification	Unmodified
Isotype	IgG
Clonality	Polyclonal
Form	Liquid
Storage	Store at 4°C short term. Aliquot and store at -20°C long term. Avoid freeze/thaw cycles.
Buffer	Rabbit IgG in phosphate buffered saline , pH 7.4, 150mM NaCl, 0.02% sodium azide and 50% glycerol.
Purification	Affinity Chromatography

Immunogen

Gene Name	CYCS
Alternative Names	CYCS; CYC; Cytochrome c
Gene ID	54205
SwissProt ID	P99999.

Application

Dilution Ratio	WB: 1:500-1:1000 IHC: 1:50-1:100 IF: 1:50-1:200 IP: 1:20
Molecular Weight	Calculated MW: 12 kDa; Observed MW: 12 kDa

Product Name: Cytochrome C Rabbit Polyclonal Antibody
Catalog #: APRab00095

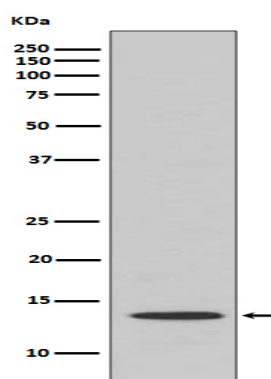
Background

CYCS Electron carrier protein. The oxidized form of the cytochrome c heme group can accept an electron from the heme group of the cytochrome c1 subunit of cytochrome reductase. Cytochrome c then transfers this electron to the cytochrome oxidase complex, the final protein carrier in the mitochondrial electron-transport chain.

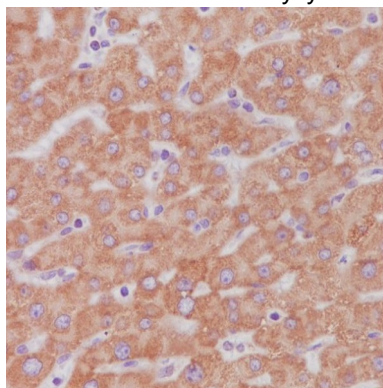
Research Area

Cardiovascular

Image Data

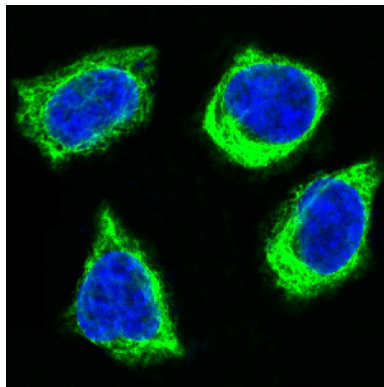


Western blot analysis of Cytochrome C in Human kidney lysates using Cytochrome C antibody.



Immunohistochemistry analysis of paraffin-embedded Human liver using Cytochrome C antibody. High-pressure and temperature Sodium Citrate pH 6.0 was used for antigen retrieval.

**Product Name: Cytochrome C Rabbit Polyclonal
Antibody**
Catalog #: APRab00095



Immunofluorescence analysis of Cytochrome C in HeLa using Cytochrome C antibody.

Note

For research use only.