

Product Name: Synaptophysin Rabbit Polyclonal Antibody
Catalog #: APRab00020

Summary

Production Name	Synaptophysin Rabbit Polyclonal Antibody
Description	Rabbit Polyclonal Antibody
Host	Rabbit
Application	WB,IHC-P,ICC/IF
Reactivity	Human,Mouse,Rat

Performance

Conjugation	Unconjugated
Modification	Unmodified
Isotype	IgG
Clonality	Polyclonal
Form	Liquid
Storage	Store at 4°C short term. Aliquot and store at -20°C long term. Avoid freeze/thaw cycles.
Buffer	Rabbit IgG in phosphate buffered saline , pH 7.4, 150mM NaCl, 0.02% sodium azide and 50% glycerol.
Purification	Affinity Chromatography

Immunogen

Gene Name	SYP
Alternative Names	SYP; Synaptophysin; Major synaptic vesicle protein p38
Gene ID	6855
SwissProt ID	P08247.

Application

Dilution Ratio	WB: 1:500-1:1000 IHC: 1:50-1:100 IF: 1:50-1:200
Molecular Weight	Calculated MW: 34 kDa; Observed MW: 38 kDa

Product Name: Synaptophysin Rabbit Polyclonal Antibody
Catalog #: AP Rab00020

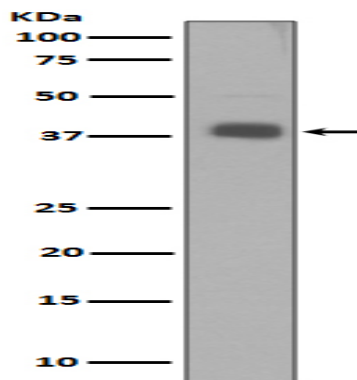
Background

SYP Possibly involved in structural functions as organizing other membrane components or in targeting the vesicles to the plasma membrane. Involved in the regulation of short-term and long-term synaptic plasticity. Belongs to the synaptophysin/synaptobrevin family. Homohexamer or homotetramer. Note: This description may include information from UniProtKB.

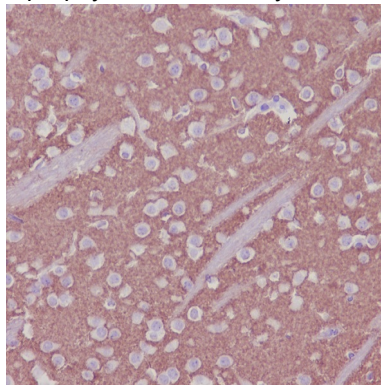
Research Area

Neuroscience

Image Data

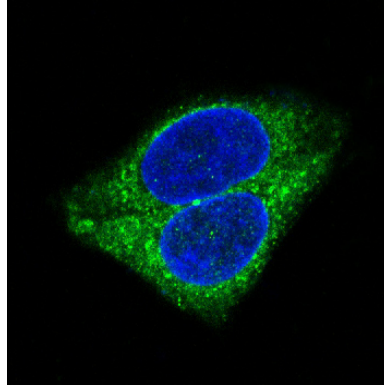


Western blot analysis of Synaptophysin in SH-SY5Y lysates using Synaptophysin antibody.



Immunohistochemistry analysis of paraffin-embedded mouse brain using Synaptophysin antibody. High-pressure and temperature Sodium Citrate pH 6.0 was used for antigen retrieval.

**Product Name: Synaptophysin Rabbit Polyclonal
Antibody**
Catalog #: APRab00020



Immunofluorescence analysis of Synaptophysin in PC-12 using Synaptophysin antibody.

Note

For research use only.