

Product Name: OTX1 Rabbit Polyclonal Antibody
Catalog #: APRab00018



Summary

Production Name	OTX1 Rabbit Polyclonal Antibody
Description	Rabbit Polyclonal Antibody
Host	Rabbit
Application	WB
Reactivity	Human,Mouse,Rat

Performance

Conjugation	Unconjugated
Modification	Unmodified
Isotype	IgG
Clonality	Polyclonal
Form	Liquid
Storage	Store at 4°C short term. Aliquot and store at -20°C long term. Avoid freeze/thaw cycles.
Buffer	Rabbit IgG in phosphate buffered saline , pH 7.4, 150mM NaCl, 0.02% sodium azide and 50% glycerol.
Purification	Affinity Chromatography

Immunogen

Gene Name	OTX1
Alternative Names	Homeobox protein OTX1 (Orthodenticle homolog 1)
Gene ID	5013
SwissProt ID	P32242.

Application

Dilution Ratio	WB: 1:500-1:1000
Molecular Weight	Calculated MW: 37 kDa; Observed MW: 37 kDa

Background

Probably plays a role in the development of the brain and the sense organs. Can bind to the BCD target sequence (BTS): 5'-

Product Name: OTX1 Rabbit Polyclonal Antibody
Catalog #: APRab00018

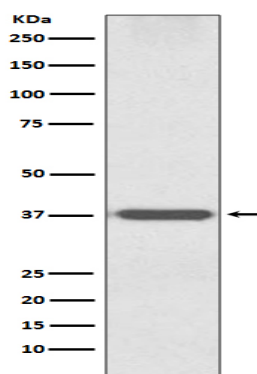


TCTAATCCC-3'.

Research Area

Neuroscience

Image Data



Western blot analysis of Otx1 in mouse brain lysates using OTX1 antibody.

Note

For research use only.