

Product Name: KDEL Rabbit Polyclonal Antibody
Catalog #: APRab00011



Summary

Production Name	KDEL Rabbit Polyclonal Antibody
Description	Rabbit Polyclonal Antibody
Host	Rabbit
Application	WB,IHC-P,ICC/IF,FC
Reactivity	Human,Mouse,Rat

Performance

Conjugation	Unconjugated
Modification	Unmodified
Isotype	IgG
Clonality	Polyclonal
Form	Liquid
Storage	Store at 4°C short term. Aliquot and store at -20°C long term. Avoid freeze/thaw cycles.
Buffer	Rabbit IgG in phosphate buffered saline , pH 7.4, 150mM NaCl, 0.02% sodium azide and 50% glycerol.
Purification	Affinity Chromatography

Immunogen

Gene Name	KDEL1
Alternative Names	Lys-Asp-Glu-Leu (KDEL
Gene ID	10945
SwissProt ID	P24390.

Application

Dilution Ratio	WB: 1:500-1:1000 IHC: 1:50-1:100 IF: 1:50-1:200 FC: 1:50-1:100
Molecular Weight	Calculated MW: 25 kDa; Observed MW: 78kDa kDa

Background

Product Name: KDEL Rabbit Polyclonal Antibody
Catalog #: APRab00011

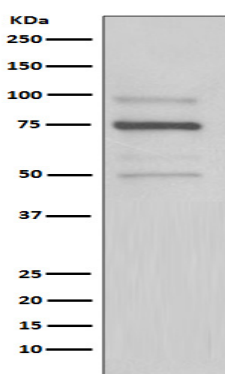


Determines the specificity of the luminal ER protein retention system. Required for the retention of luminal endoplasmic reticulum proteins. Determines the specificity of the luminal ER protein retention system. Also required for normal vesicular traffic through the Golgi. This receptor recognizes K-D-E-L.

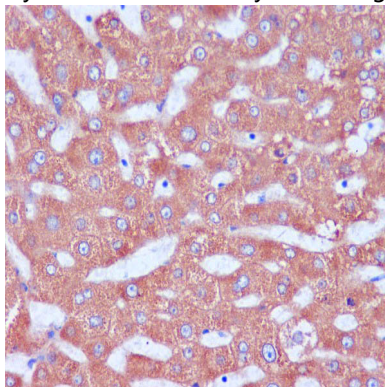
Research Area

Tags & Cell Markers

Image Data



Western blot analysis of KDEL in HeLa lysates using KDEL antibody.



Immunohistochemistry analysis of paraffin-embedded Human liver using KDEL antibody. High-pressure and temperature Sodium Citrate pH 6.0 was used for antigen retrieval.

Note

For research use only.