

Product Name: CD19 Rabbit Monoclonal Antibody
Catalog #: AMRe21619



Summary

Production Name	CD19 Rabbit Monoclonal Antibody
Description	Rabbit Monoclonal Antibody
Host	Rabbit
Application	WB,IHC,IF,IP,ELISA
Reactivity	Human

Performance

Conjugation	Unconjugated
Modification	Unmodified
Isotype	IgG,Kappa
Clonality	Monoclonal
Form	Liquid
Storage	Store at 4°C short term. Aliquot and store at -20°C long term. Avoid freeze/thaw cycles.
Buffer	PBS, 50% glycerol, 0.05% Proclin 300, 0.05%BSA
Purification	Protein A

Immunogen

Gene Name	CD19
Alternative Names	CD19
Gene ID	930.0
SwissProt ID	P15391.

Application

Dilution Ratio	IHC 1:200-1000;WB 1:1000-5000;IF 1:200-1000;ELISA 1:5000-20000;IP 1:50-200
Molecular Weight	Calculated MW:110kD;Observed MW:110kD

Background

Cell localization:Membranous.CD19 molecule(CD19) Homo sapiens Lymphocytes proliferate and differentiate in response

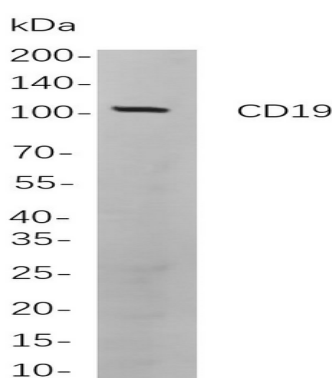
Product Name: CD19 Rabbit Monoclonal Antibody
Catalog #: AMRe21619



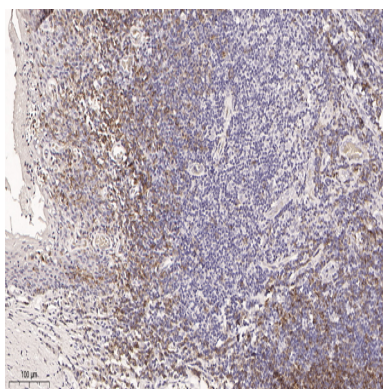
to various concentrations of different antigens. The ability of the B cell to respond in a specific, yet sensitive manner to the various antigens is achieved with the use of low-affinity antigen receptors. This gene encodes a cell surface molecule which assembles with the antigen receptor of B lymphocytes in order to decrease the threshold for antigen receptor-dependent stimulation. [provided by RefSeq, Jul 2008],

Research Area

Image Data



Western blot analysis of lysates from Raji cells, using CD19 Rabbit mAb. The HRP-conjugated Goat anti-Rabbit IgG antibody was used to detect the antibody.



Immunohistochemical analysis of paraffin-embedded Human tonsil tissue. 1, primary Antibody was diluted at 1:200(4°C, overnight). 2, EDTA pH 9.0 was used for antibody retrieval(>98°C, 20min). 3, Secondary antibody was diluted at 1:200(room temperature, 30min).

Note

For research use only.