

Product Name: RhoA Rabbit Monoclonal Antibody
Catalog #: AMRe21618



Summary

Production Name	RhoA Rabbit Monoclonal Antibody
Description	Rabbit Monoclonal Antibody
Host	Rabbit
Application	WB,IHC,IF,IP,ELISA
Reactivity	Human,Mouse,Rat

Performance

Conjugation	Unconjugated
Modification	Unmodified
Isotype	IgG,Kappa
Clonality	Monoclonal
Form	Liquid
Storage	Store at 4°C short term. Aliquot and store at -20°C long term. Avoid freeze/thaw cycles.
Buffer	PBS, 50% glycerol, 0.05% Proclin 300, 0.05%BSA
Purification	Protein A

Immunogen

Gene Name	RHOA
Alternative Names	Transforming protein RhoA;Rho cDNA clone 12;h12;
Gene ID	387.0
SwissProt ID	P61586.

Application

Dilution Ratio	IHC 1:200-1000;WB 1:1000-5000;IF 1:200-1000;ELISA 1:5000-20000;IP 1:50-200
Molecular Weight	Calculated MW:21kD;Observed MW:21kD

Background

Cell localization:Cell membrane; Lipid-anchor; Cytoplasmic side. Cytoplasm, cytoskeleton. Cleavage furrow. Cytoplasm, cell

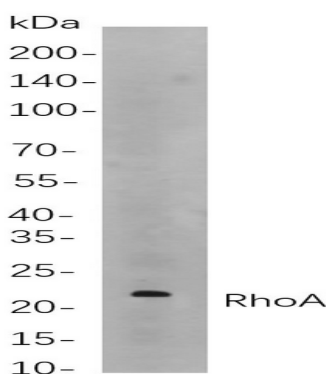
Product Name: RhoA Rabbit Monoclonal Antibody
Catalog #: AMRe21618



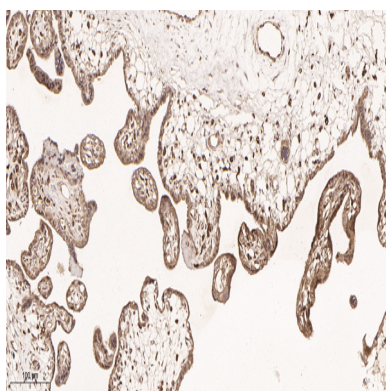
cortex . Midbody. Cell projection, lamellipodium . Cell projection, dendrite . Nucleus . Localized to cell-cell contacts in calcium-treated keratinocytes (By similarity). Translocates to the equatorial region before furrow formation in a ECT2-dependent manner. Localizes to the equatorial cell cortex (at the site of the presumptive furrow) in early anaphase in an activated form and in a myosin- and actin-independent manner. ..This gene encodes a member of the Rho family of small GTPases, which cycle between inactive GDP-bound and active GTP-bound states and function as molecular switches in signal transduction cascades. Rho proteins promote reorganization of the actin cytoskeleton and regulate cell shape, attachment, and motility. Overexpression of this gene is associated with tumor cell proliferation and metastasis. Multiple alternatively spliced variants have been identified. [provided by RefSeq, Sep 2015],

Research Area

Image Data



Western blot analysis of lysates from NIH3T3 cells, using RhoA Rabbit mAb. The HRP-conjugated Goat anti-Rabbit IgG antibody was used to detect the antibody.



Immunohistochemical analysis of paraffin-embedded Human placenta tissue. 1, primary Antibody was diluted at 1:200(4°C,overnight). 2, EDTA pH 9.0 was used for antibody retrieval(>98°C,20min). 3,Secondary antibody was diluted at 1:200(room temperature, 30min).

Product Name: RhoA Rabbit Monoclonal Antibody
Catalog #: AMRe21618



Note

For research use only.