

Product Name: Aurora A Rabbit Monoclonal Antibody
Catalog #: AMRe21613



Summary

Production Name	Aurora A Rabbit Monoclonal Antibody
Description	Rabbit Monoclonal Antibody
Host	Rabbit
Application	WB,IHC,IF,IP,ELISA
Reactivity	Human

Performance

Conjugation	Unconjugated
Modification	Unmodified
Isotype	IgG,Kappa
Clonality	Monoclonal
Form	Liquid
Storage	Store at 4°C short term. Aliquot and store at -20°C long term. Avoid freeze/thaw cycles.
Buffer	PBS, 50% glycerol, 0.05% Proclin 300, 0.05%BSA
Purification	Protein A

Immunogen

Gene Name	AURKA Aurora kinase A;Aurora 2;Aurora/IPL1-related kinase 1;ARK-1;Aurora-related kinase
Alternative Names	1;hARK1;Breast tumor-amplified kinase;Serine/threonine-protein kinase 15;Serine/threonine-protein kinase 6;Serine/threonine-protein kinase aurora-A;
Gene ID	6790.0
SwissProt ID	O14965.

Application

Dilution Ratio	IHC 1:200-1000;WB 1:1000-5000;IF 1:200-1000;ELISA 1:5000-20000;IP 1:50-200
Molecular Weight	Calculated MW:45kD;Observed MW:45kD

Background

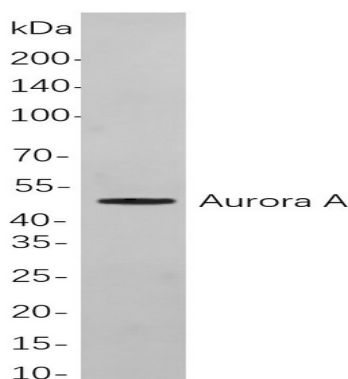
Product Name: Aurora A Rabbit Monoclonal Antibody
Catalog #: AMRe21613



Cell localization:Membranous.Aurora A(AURKA) Homo sapiens The protein encoded by this gene is a cell cycle-regulated kinase that appears to be involved in microtubule formation and/or stabilization at the spindle pole during chromosome segregation. The encoded protein is found at the centrosome in interphase cells and at the spindle poles in mitosis. This gene may play a role in tumor development and progression. A processed pseudogene of this gene has been found on chromosome 1, and an unprocessed pseudogene has been found on chromosome 10. Multiple transcript variants encoding the same protein have been found for this gene.

Research Area

Image Data



Western blot analysis of lysates from HeLa

cells, using Aurora A Rabbit mAb. The HRP-conjugated Goat anti-Rabbit IgG antibody was used to detect the antibody.

Note

For research use only.