

Product Name: SDHA Rabbit Monoclonal Antibody
Catalog #: AMRe21612



Summary

Production Name	SDHA Rabbit Monoclonal Antibody
Description	Rabbit Monoclonal Antibody
Host	Rabbit
Application	WB,IHC,IF,IP,ELISA
Reactivity	Human,Mouse,Rat

Performance

Conjugation	Unconjugated
Modification	Unmodified
Isotype	IgG,Kappa
Clonality	Monoclonal
Form	Liquid
Storage	Store at 4°C short term. Aliquot and store at -20°C long term. Avoid freeze/thaw cycles.
Buffer	PBS, 50% glycerol, 0.05% Proclin 300, 0.05%BSA
Purification	Protein A

Immunogen

Gene Name	SDHA
Alternative Names	SDHA;SDH2;SDHF;Succinate dehydrogenase [ubiquinone] flavoprotein subunit;mitochondrial;Flavoprotein subunit of complex II;Fp
Gene ID	6389.0
SwissProt ID	P31040.

Application

Dilution Ratio	IHC 1:200-1000;WB 1:1000-5000;IF 1:200-1000;ELISA 1:5000-20000;IP 1:50-200
Molecular Weight	Calculated MW:73kD;Observed MW:73kD

Background

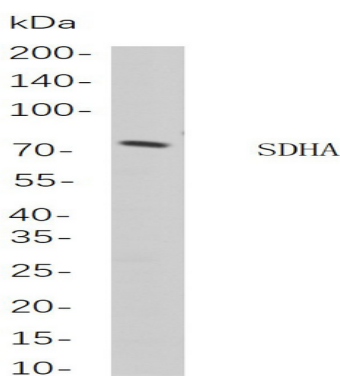
Product Name: SDHA Rabbit Monoclonal Antibody
Catalog #: AMRe21612



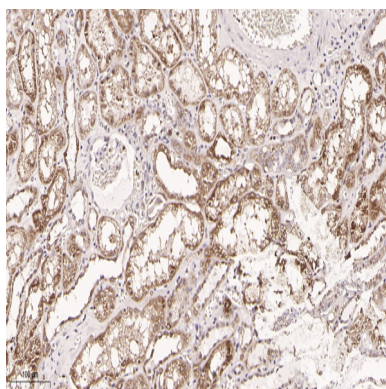
Cell localization: Cytoplasmic. This gene encodes a major catalytic subunit of succinate-ubiquinone oxidoreductase, a complex of the mitochondrial respiratory chain. The complex is composed of four nuclear-encoded subunits and is localized in the mitochondrial inner membrane. Mutations in this gene have been associated with a form of mitochondrial respiratory chain deficiency known as Leigh Syndrome. A pseudogene has been identified on chromosome 3q29. Alternatively spliced transcript variants encoding different isoforms have been found for this gene. [provided by RefSeq, Jun 2014],

Research Area

Image Data

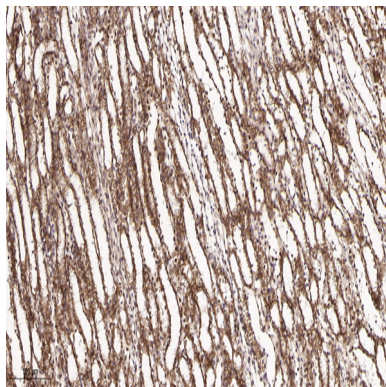


Western blot analysis of lysates from HeLa cells, using SDHA Rabbit mAb. The HRP-conjugated Goat anti-Rabbit IgG antibody was used to detect the antibody.



Immunohistochemical analysis of paraffin-embedded Human kidney tissue. 1, primary Antibody was diluted at 1:200(4°C, overnight). 2, EDTA pH 9.0 was used for antibody retrieval(>98°C, 20min). 3, Secondary antibody was diluted at 1:200(room temperature, 30min).

Product Name: SDHA Rabbit Monoclonal Antibody
Catalog #: AMRe21612



Immunohistochemical analysis of paraffin-embedded Rat kidney tissue. 1, primary Antibody was diluted at 1:200(4°C,overnight). 2, EDTA pH 9.0 was used for antibody retrieval(>98°C,20min). 3,Secondary antibody was diluted at 1:200(room temperature, 30min).

Note

For research use only.