

**Product Name: IGF1 Receptor Rabbit Monoclonal Antibody**  
**Catalog #: AMRe21599**

---

## Summary

<b>Production Name</b>	IGF1 Receptor Rabbit Monoclonal Antibody
<b>Description</b>	Rabbit Monoclonal Antibody
<b>Host</b>	Rabbit
<b>Application</b>	WB,IHC,IF,IP,ELISA
<b>Reactivity</b>	Human

## Performance

<b>Conjugation</b>	Unconjugated
<b>Modification</b>	Unmodified
<b>Isotype</b>	IgG,Kappa
<b>Clonality</b>	Monoclonal
<b>Form</b>	Liquid
<b>Storage</b>	Store at 4°C short term. Aliquot and store at -20°C long term. Avoid freeze/thaw cycles.
<b>Buffer</b>	PBS, 50% glycerol, 0.05% Proclin 300, 0.05%BSA
<b>Purification</b>	Protein A

## Immunogen

<b>Gene Name</b>	IGF1R
<b>Alternative Names</b>	IGF1R;Insulin-like growth factor 1 receptor;Insulin-like growth factor I receptor;IGF-I receptor;CD antigen CD221
<b>Gene ID</b>	3480.0
<b>SwissProt ID</b>	P08069.

## Application

<b>Dilution Ratio</b>	IHC 1:100-200;WB 1:1000-5000;IF 1:200-1000;ELISA 1:5000-20000;IP 1:50-200
<b>Molecular Weight</b>	Calculated MW:154kD;Observed MW:200kD

**Product Name: IGF1 Receptor Rabbit Monoclonal Antibody**  
**Catalog #: AMRe21599**

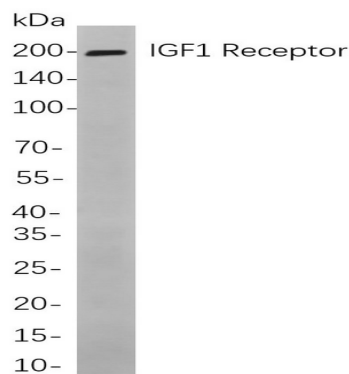
---

## Background

Cell localization:Membranous.This receptor binds insulin-like growth factor with a high affinity. It has tyrosine kinase activity. The insulin-like growth factor I receptor plays a critical role in transformation events. Cleavage of the precursor generates alpha and beta subunits. It is highly overexpressed in most malignant tissues where it functions as an anti-apoptotic agent by enhancing cell survival. Alternatively spliced transcript variants encoding distinct isoforms have been found for this gene. [provided by RefSeq, May 2014],

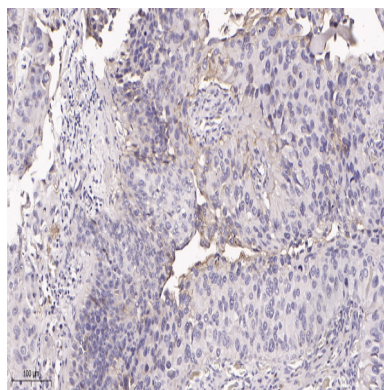
## Research Area

## Image Data



Western blot analysis of lysates from LoVo

cells, using IGF1 Receptor Rabbit mAb. The HRP-conjugated Goat anti-Rabbit IgG antibody was used to detect the antibody.



Immunohistochemical analysis of paraffin-embedded human bladder carcinoma tissue. 1, primary Antibody was diluted at 1:200(4°C,overnight). 2, EDTA pH 9.0 was used for antibody retrieval(>98°C,20min). 3,Secondary antibody was diluted at 1:200(room temperature, 30min).

**Product Name: IGF1 Receptor Rabbit Monoclonal Antibody**  
**Catalog #: AMRe21599**

---



**Note**

For research use only.