

Summary

| | |
|------------------------|---------------------------------|
| Production Name | Ki67 Rabbit Monoclonal Antibody |
| Description | Rabbit Monoclonal Antibody |
| Host | Rabbit |
| Application | WB,IHC,IF,IP,ELISA |
| Reactivity | Human,Mouse,Rat |

Performance

| | |
|---------------------|--|
| Conjugation | Unconjugated |
| Modification | Unmodified |
| Isotype | IgG,Kappa |
| Clonality | Monoclonal |
| Form | Liquid |
| Storage | Store at 4°C short term. Aliquot and store at -20°C long term. Avoid freeze/thaw cycles. |
| Buffer | PBS, 50% glycerol, 0.05% Proclin 300, 0.05%BSA |
| Purification | Protein A |

Immunogen

| | |
|--------------------------|---------------------|
| Gene Name | MKI67 |
| Alternative Names | MKI67;Antigen KI-67 |
| Gene ID | 4288.0 |
| SwissProt ID | P46013. |

Application

| | |
|-------------------------|--|
| Dilution Ratio | IHC 1:200-1000;WB 1:1000-5000;IF 1:200-1000;ELISA 1:5000-20000;IP 1:50-200 |
| Molecular Weight | Calculated MW:359kD;Observed MW:359kD |

Background

Cell localization:Nucleus.This gene encodes a nuclear protein that is associated with and may be necessary for cellular

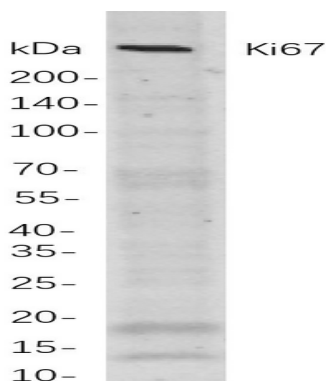
Product Name: Ki67 Rabbit Monoclonal Antibody
Catalog #: AMRe21575



proliferation. Alternatively spliced transcript variants have been described. A related pseudogene exists on chromosome X.
[provided by RefSeq, Mar 2009],

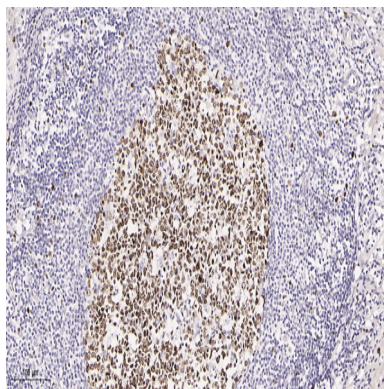
Research Area

Image Data



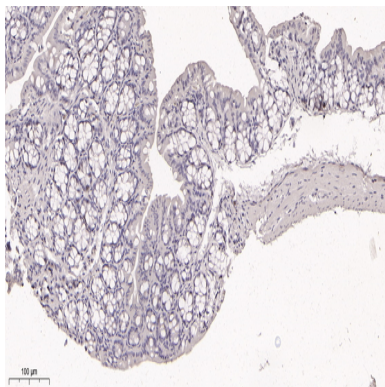
Western blot analysis of lysates from Hela

cells, using Ki67 Rabbit mAb. The HRP-conjugated Goat anti-Rabbit IgG antibody was used to detect the antibody.

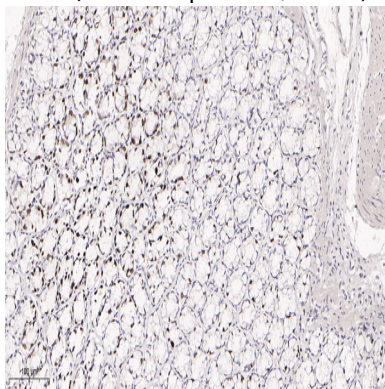


Immunohistochemical analysis of paraffin-embedded human appendix tissue. 1, primary Antibody was diluted at 1:200(4°C,overnight). 2, EDTA pH 9.0 was used for antibody retrieval(>98°C,20min). 3,Secondary antibody was diluted at 1:200(room temperature, 30min).

Product Name: Ki67 Rabbit Monoclonal Antibody
Catalog #: AMRe21575



Immunohistochemical analysis of paraffin-embedded mouse colon tissue. 1, primary Antibody was diluted at 1:200(4°C,overnight). 2, EDTA pH 9.0 was used for antibody retrieval(>98°C,20min). 3,Secondary antibody was diluted at 1:200(room temperature, 30min).



Immunohistochemical analysis of paraffin-embedded rat colon tissue. 1, primary Antibody was diluted at 1:200(4°C,overnight). 2, EDTA pH 9.0 was used for antibody retrieval(>98°C,20min). 3,Secondary antibody was diluted at 1:200(room temperature, 30min).

Note

For research use only.