

**Product Name: FOXO3A (Phospho Ser253) Rabbit Monoclonal Antibody**  
**Catalog #: AMRe21512**

---

## Summary

|                        |  |
|------------------------|--|
| <b>Production Name</b> | FOXO3A (Phospho Ser253) Rabbit Monoclonal Antibody |
| <b>Description</b>     | Rabbit Monoclonal Antibody                         |
| <b>Host</b>            | Rabbit   |
| <b>Application</b>     | WB,IHC,IF,IP,ELISA                                 |
| <b>Reactivity</b>      | Human,Mouse,Rat                                    |

## Performance

|                     |  |
|---------------------|--|
| <b>Conjugation</b>  | Phospho  |
| <b>Modification</b> | Phosphorylated   |
| <b>Isotype</b>      | IgG,Kappa  |
| <b>Clonality</b>    | Monoclonal   |
| <b>Form</b>         | Liquid   |
| <b>Storage</b>      | Store at 4°C short term. Aliquot and store at -20°C long term. Avoid freeze/thaw cycles. |
| <b>Buffer</b>       | PBS, 50% glycerol, 0.05% Proclin 300, 0.05%BSA   |
| <b>Purification</b> | Protein A  |

## Immunogen

|                          |  |
|--------------------------|--|
| <b>Gene Name</b>         | FOXO3  |
| <b>Alternative Names</b> | FOXO3;FKHRL1;FOXO3A;Forkhead box protein O3;AF6q21 protein;Forkhead in rhabdomyosarcoma-like 1 |
| <b>Gene ID</b>           | 2309.0   |
| <b>SwissProt ID</b>      | O43524.  |

## Application

|                         |   |
|-------------------------|---|
| <b>Dilution Ratio</b>   | IHC 1:200-1:1000;WB 1:1000-1:5000;IF 1:200-1:1000;ELISA 1:5000-1:20000;IP 1:50-1:200, |
| <b>Molecular Weight</b> | Calculated MW:71kD;Observed MW:97kD   |

**Product Name: FOXO3A (Phospho Ser253) Rabbit  
Monoclonal Antibody  
Catalog #: AMRe21512**

---

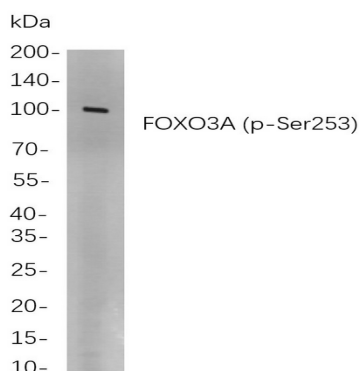


## Background

Cell localization: Cytoplasm. This gene belongs to the forkhead family of transcription factors which are characterized by a distinct forkhead domain. This gene likely functions as a trigger for apoptosis through expression of genes necessary for cell death. Translocation of this gene with the MLL gene is associated with secondary acute leukemia. Alternatively spliced transcript variants encoding the same protein have been observed. [provided by RefSeq, Jul 2008],

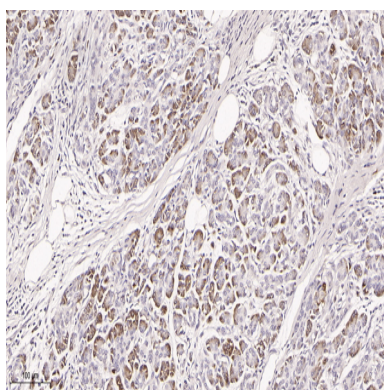
## Research Area

## Image Data



Western blot analysis of lysates from HEK293

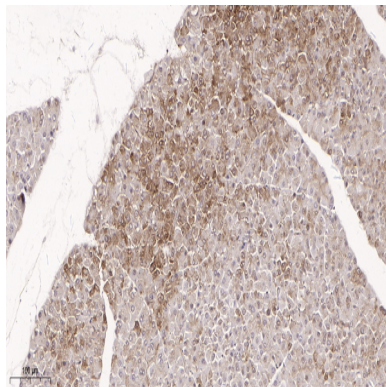
cells, using FOXO3A (p-Ser253) Rabbit mAb. The HRP-conjugated Goat anti-Rabbit IgG antibody was used to detect the antibody.



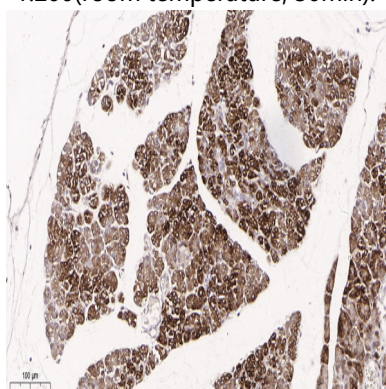
Immunohistochemical analysis of paraffin-embedded human pancreas tissue. 1, primary Antibody was diluted at 1:200(4°C, overnight). 2, EDTA pH 9.0 was used for antibody retrieval(>98°C, 20min). 3, Secondary antibody was diluted at 1:200(room temperature, 30min).

**Product Name: FOXO3A (Phospho Ser253) Rabbit  
Monoclonal Antibody  
Catalog #: AMRe21512**

---



Immunohistochemical analysis of paraffin-embedded mouse pancreas tissue. 1, primary Antibody was diluted at 1:200(4°C,overnight). 2, EDTA pH 9.0 was used for antibody retrieval(>98°C,20min). 3,Secondary antibody was diluted at 1:200(room temperature, 30min).



Immunohistochemical analysis of paraffin-embedded rat pancreas tissue. 1, primary Antibody was diluted at 1:200(4°C,overnight). 2, EDTA pH 9.0 was used for antibody retrieval(>98°C,20min). 3,Secondary antibody was diluted at 1:200(room temperature, 30min).

## **Note**

For research use only.