

**Product Name: Histone H2A.X (Phospho Ser139) Rabbit Monoclonal Antibody**  
**Catalog #: AMRe21478**

---

## Summary

<b>Production Name</b>	Histone H2A.X (Phospho Ser139) Rabbit Monoclonal Antibody
<b>Description</b>	Rabbit Monoclonal Antibody
<b>Host</b>	Rabbit
<b>Application</b>	WB,IHC,IF,IP,ELISA
<b>Reactivity</b>	Human,Mouse,Rat

## Performance

<b>Conjugation</b>	Phospho
<b>Modification</b>	Phosphorylated
<b>Isotype</b>	IgG,Kappa
<b>Clonality</b>	Monoclonal
<b>Form</b>	Liquid
<b>Storage</b>	Store at 4°C short term. Aliquot and store at -20°C long term. Avoid freeze/thaw cycles.
<b>Buffer</b>	PBS, 50% glycerol, 0.05% Proclin 300, 0.05%BSA
<b>Purification</b>	Protein A

## Immunogen

<b>Gene Name</b>	H2AFX
<b>Alternative Names</b>	H2AFX;H2AX;Histone H2A.x;H2a/x
<b>Gene ID</b>	3014.0
<b>SwissProt ID</b>	P16104.

## Application

<b>Dilution Ratio</b>	IHC 1:2000-1:8000;WB 1:1000-1:5000;IF 1:200-1:1000;ELISA 1:5000-1:20000;IP 1:50-1:200,
<b>Molecular Weight</b>	Calculated MW:15kD;Observed MW:15kD

## Background

---

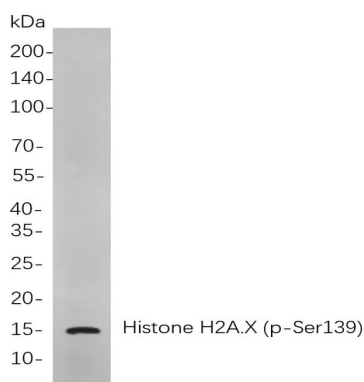
**Product Name: Histone H2A.X (Phospho Ser139) Rabbit  
Monoclonal Antibody  
Catalog #: AMRe21478**



Cell localization:Nucleus.Histones are basic nuclear proteins that are responsible for the nucleosome structure of the chromosomal fiber in eukaryotes. Two molecules of each of the four core histones (H2A, H2B, H3, and H4) form an octamer, around which approximately 146 bp of DNA is wrapped in repeating units, called nucleosomes. The linker histone, H1, interacts with linker DNA between nucleosomes and functions in the compaction of chromatin into higher order structures. This gene encodes a replication-independent histone that is a member of the histone H2A family, and generates two transcripts through the use of the conserved stem-loop termination motif, and the polyA addition motif. [provided by RefSeq, Oct 2015],

## Research Area

## Image Data



Western blot analysis of lysates from 293 cells, using Histone H2A.X (p-Ser139) Rabbit mAb. The HRP-conjugated Goat anti-Rabbit IgG antibody was used to detect the antibody.

## Note

For research use only.