

**Product Name: Smad2 (Phospho Ser250) Rabbit  
Monoclonal Antibody  
Catalog #: AMRe21461**

---

## Summary

<b>Production Name</b>	Smad2 (Phospho Ser250) Rabbit Monoclonal Antibody
<b>Description</b>	Rabbit Monoclonal Antibody
<b>Host</b>	Rabbit
<b>Application</b>	WB,IHC,IF,IP,ELISA
<b>Reactivity</b>	Human,Mouse,Rat

## Performance

<b>Conjugation</b>	Phospho
<b>Modification</b>	Phosphorylated
<b>Isotype</b>	IgG,Kappa
<b>Clonality</b>	Monoclonal
<b>Form</b>	Liquid
<b>Storage</b>	Store at 4°C short term. Aliquot and store at -20°C long term. Avoid freeze/thaw cycles.
<b>Buffer</b>	PBS, 50% glycerol, 0.05% Proclin 300, 0.05%BSA
<b>Purification</b>	Protein A

## Immunogen

<b>Gene Name</b>	SMAD2 SMAD2;MADH2;MADR2;Mothers against decapentaplegic homolog 2;MAD homolog
<b>Alternative Names</b>	2;Mothers against DPP homolog 2;JV18-1;Mad-related protein 2;hMAD-2;SMAD family member 2;SMAD 2;Smad2;hSMAD2
<b>Gene ID</b>	4087.0
<b>SwissProt ID</b>	Q15796.

## Application

<b>Dilution Ratio</b>	IHC 1:100-1:500;WB 1:1000-1:5000;IF 1:200-1:1000;ELISA 1:5000-1:20000;IP 1:50-1:200,
<b>Molecular Weight</b>	Calculated MW:58kD;Observed MW:58kD

**Product Name: Smad2 (Phospho Ser250) Rabbit  
Monoclonal Antibody  
Catalog #: AMRe21461**

---

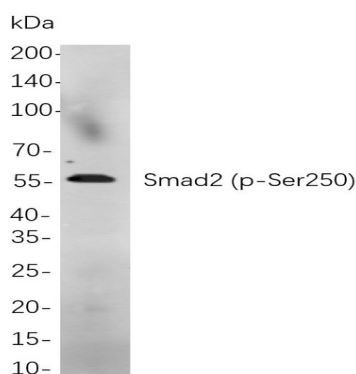


## Background

Cell localization: Cytoplasm, Nuclear. The protein encoded by this gene belongs to the SMAD, a family of proteins similar to the gene products of the *Drosophila* gene *mothers against decapentaplegic* (Mad) and the *C. elegans* gene *Sma*. SMAD proteins are signal transducers and transcriptional modulators that mediate multiple signaling pathways. This protein mediates the signal of the transforming growth factor (TGF)- $\beta$ , and thus regulates multiple cellular processes, such as cell proliferation, apoptosis, and differentiation. This protein is recruited to the TGF- $\beta$  receptors through its interaction with the SMAD anchor for receptor activation (SARA) protein. In response to TGF- $\beta$  signal, this protein is phosphorylated by the TGF- $\beta$  receptors. The phosphorylation induces the dissociation of this protein with SARA and the association with the family member SMAD4. The association with SMAD4 is important for the translocation

## Research Area

## Image Data



Western blot analysis of lysates from A549 treated with TPA for 48 hours cells, using Smad2 (p-Ser250) Rabbit mAb. The HRP-conjugated Goat anti-Rabbit IgG antibody was used to detect the antibody.

## Note

For research use only.