

Product Name: Cytokeratin 7 Rabbit Monoclonal Antibody
Catalog #: AMRe21446

Summary

Production Name	Cytokeratin 7 Rabbit Monoclonal Antibody
Description	Rabbit Monoclonal Antibody
Host	Rabbit
Application	WB,IHC,IF,IP,ELISA
Reactivity	Human,Mouse,Rat

Performance

Conjugation	Unconjugated
Modification	Unmodified
Isotype	IgG,Kappa
Clonality	Monoclonal
Form	Liquid
Storage	Store at 4°C short term. Aliquot and store at -20°C long term. Avoid freeze/thaw cycles.
Buffer	PBS, 50% glycerol, 0.05% Proclin 300, 0.05%BSA
Purification	Protein A

Immunogen

Gene Name	KRT7 SCL CK 7;CK-7;CK7;Cytokeratin 7;Cytokeratin-7;D15Wsu77e;K2C7;K2C7_HUMAN;K7;Keratin 7;Keratin 7, type II;Keratin type II cytoskeletal 7;Keratin, 55K type II cytoskeletal;Keratin, simple epithelial;Keratin, simple epithelial type I, K7;Keratin, type II cytoskeletal 7;Keratin-7;Krt2-7;KRT7;MGC11625;MGC129731;MGC3625;Sarcolectin;SCL;Type II mesothelial keratin K7;Type-II keratin Kb7
Alternative Names	
Gene ID	3855.0
SwissProt ID	P08729.

Application

Dilution Ratio	IHC 1:1000-1:2000;WB 1:1000-1:5000;IF 1:200-1:1000;ELISA 1:5000-1:20000;IP 1:50-
-----------------------	--

Product Name: Cytokeratin 7 Rabbit Monoclonal Antibody
Catalog #: AMRe21446

1:200,

Molecular Weight

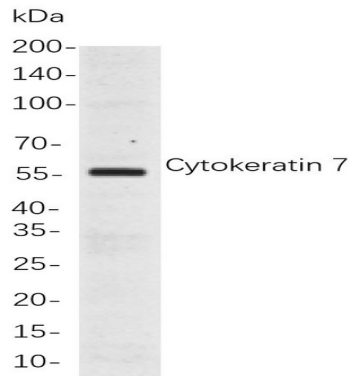
Calculated MW:51kD;Observed MW:55kD

Background

Cell localization:Cytoplasm.keratin 7(KRT7) Homo sapiens The protein encoded by this gene is a member of the keratin gene family. The type II cytokeratins consist of basic or neutral proteins which are arranged in pairs of heterotypic keratin chains coexpressed during differentiation of simple and stratified epithelial tissues. This type II cytokeratin is specifically expressed in the simple epithelia lining the cavities of the internal organs and in the gland ducts and blood vessels. The genes encoding the type II cytokeratins are clustered in a region of chromosome 12q12-q13. Alternative splicing may result in several transcript variants; however, not all variants have been fully described. [provided by RefSeq, Jul 2008],

Research Area

Image Data



Western blot analysis of lysates from Hela

cells, using Cytokeratin 7 Rabbit mAb. The HRP-conjugated Goat anti-Rabbit IgG antibody was used to detect the antibody.

Note

For research use only.