

**Product Name: GSK3 $\alpha$  Rabbit Monoclonal Antibody**  
**Catalog #: AMRe21445**



## Summary

<b>Production Name</b>	GSK3 $\alpha$ Rabbit Monoclonal Antibody
<b>Description</b>	Rabbit Monoclonal Antibody
<b>Host</b>	Rabbit
<b>Application</b>	WB,IHC,IF,IP,ELISA
<b>Reactivity</b>	Human,Mouse,Rat

## Performance

<b>Conjugation</b>	Unconjugated
<b>Modification</b>	Unmodified
<b>Isotype</b>	IgG,Kappa
<b>Clonality</b>	Monoclonal
<b>Form</b>	Liquid
<b>Storage</b>	Store at 4°C short term. Aliquot and store at -20°C long term. Avoid freeze/thaw cycles.
<b>Buffer</b>	PBS, 50% glycerol, 0.05% Proclin 300, 0.05%BSA
<b>Purification</b>	Protein A

## Immunogen

<b>Gene Name</b>	GSK3A
<b>Alternative Names</b>	GSK3A;Glycogen synthase kinase-3 alpha;GSK-3 alpha;Serine/threonine-protein kinase
<b>Gene ID</b>	2931.0
<b>SwissProt ID</b>	P49840.

## Application

<b>Dilution Ratio</b>	IHC 1:200-1:1000;WB 1:1000-1:5000;IF 1:200-1:1000;ELISA 1:5000-1:20000;IP 1:50-1:200,
<b>Molecular Weight</b>	Calculated MW:51kD;Observed MW:51kD

## Background

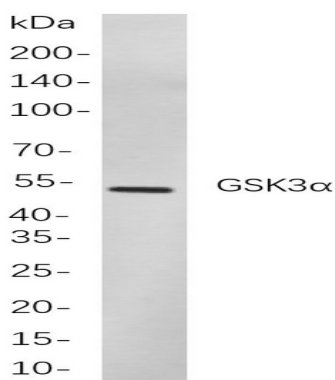
**Product Name: GSK3 $\alpha$  Rabbit Monoclonal Antibody**  
**Catalog #: AMRe21445**



Cell localization: Cytoplasm. glycogen synthase kinase 3 alpha (GSK3A) Homo sapiens This gene encodes a multifunctional Ser/Thr protein kinase that is implicated in the control of several regulatory proteins including glycogen synthase, and transcription factors, such as JUN. It also plays a role in the WNT and PI3K signaling pathways, as well as regulates the production of beta-amyloid peptides associated with Alzheimer's disease. [provided by RefSeq, Oct 2011],

## Research Area

## Image Data



Western blot analysis of lysates from K562

cells, using GSK3 $\alpha$  Rabbit mAb. The HRP-conjugated Goat anti-Rabbit IgG antibody was used to detect the antibody.

## Note

For research use only.