

Product Name: HP1 α Rabbit Monoclonal Antibody
Catalog #: AMRe21444



Summary

| | |
|------------------------|---|
| Production Name | HP1 α Rabbit Monoclonal Antibody |
| Description | Rabbit Monoclonal Antibody |
| Host | Rabbit |
| Application | WB,IHC,IF,IP,ELISA |
| Reactivity | Human,Mouse,Rat |

Performance

| | |
|---------------------|--|
| Conjugation | Unconjugated |
| Modification | Unmodified |
| Isotype | IgG,Kappa |
| Clonality | Monoclonal |
| Form | Liquid |
| Storage | Store at 4°C short term. Aliquot and store at -20°C long term. Avoid freeze/thaw cycles. |
| Buffer | PBS, 50% glycerol, 0.05% Proclin 300, 0.05%BSA |
| Purification | Protein A |

Immunogen

| | |
|--------------------------|--|
| Gene Name | CBX5 HP1A |
| Alternative Names | Chromobox protein homolog 5;Antigen p25;Heterochromatin protein 1 homolog alpha;HP1 alpha; |
| Gene ID | 23468.0 |
| SwissProt ID | P45973. |

Application

| | |
|-------------------------|---|
| Dilution Ratio | IHC 1:400-1:2000;WB 1:1000-1:5000;IF 1:200-1:1000;ELISA 1:5000-1:20000;IP 1:50-1:200, |
| Molecular Weight | Calculated MW:22kD;Observed MW:22kD |

Background

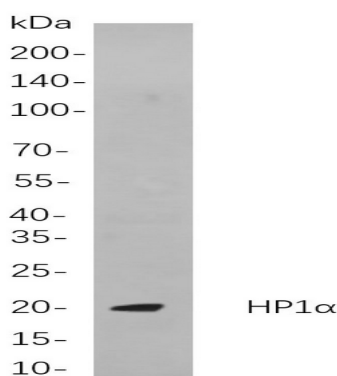
Product Name: HP1 α Rabbit Monoclonal Antibody
Catalog #: AMRe21444



Cell localization:Nucleus.This gene encodes a highly conserved nonhistone protein, which is a member of the heterochromatin protein family. The protein is enriched in the heterochromatin and associated with centromeres. The protein has a single N-terminal chromodomain which can bind to histone proteins via methylated lysine residues, and a C-terminal chromo shadow-domain (CSD) which is responsible for the homodimerization and interaction with a number of chromatin-associated nonhistone proteins. The encoded product is involved in the formation of functional kinetochore through interaction with essential kinetochore proteins. The gene has a pseudogene located on chromosome 3. Multiple alternatively spliced variants, encoding the same protein, have been identified. [provided by RefSeq, Jul 2008],

Research Area

Image Data



Western blot analysis of lysates from 3T3-L1

cells, using HP1 α Rabbit mAb. The HRP-conjugated Goat anti-Rabbit IgG antibody was used to detect the antibody.

Note

For research use only.