

**Product Name: Ubiquitin K48 Rabbit Monoclonal Antibody**  
**Catalog #: AMRe21440**

---

## Summary

<b>Production Name</b>	Ubiquitin K48 Rabbit Monoclonal Antibody
<b>Description</b>	Rabbit Monoclonal Antibody
<b>Host</b>	Rabbit
<b>Application</b>	WB,IHC,IF,IP,ELISA
<b>Reactivity</b>	Human,Mouse,Rat

## Performance

<b>Conjugation</b>	Unconjugated
<b>Modification</b>	Unmodified
<b>Isotype</b>	IgG,Kappa
<b>Clonality</b>	Monoclonal
<b>Form</b>	Liquid
<b>Storage</b>	Store at 4°C short term. Aliquot and store at -20°C long term. Avoid freeze/thaw cycles.
<b>Buffer</b>	PBS, 50% glycerol, 0.05% Proclin 300, 0.05%BSA
<b>Purification</b>	Protein A

## Immunogen

<b>Gene Name</b>	UBA52/RPS27A/UBB/UBC UBB;Polyubiquitin-B;UBC;Polyubiquitin-C;RPS27A;UBA80;UBCEP1;Ubiquitin-40S ribosomal protein S27a;Ubiquitin carboxyl extension protein
<b>Alternative Names</b>	80;UBA52;UBCEP2;Ubiquitin-60S ribosomal protein L40;CEP52;Ubiquitin A-52 residue ribosomal pr;Ubiquitin K48;
<b>Gene ID</b>	7311.0
<b>SwissProt ID</b>	P0CG47;P0CG48;P62979;P62987.

## Application

<b>Dilution Ratio</b>	IHC 1:200-1:1000;WB 1:500-1:2000;IF 1:200-1:1000;ELISA 1:5000-1:20000;IP 1:50-1:200;
-----------------------	--

**Product Name: Ubiquitin K48 Rabbit Monoclonal Antibody**  
**Catalog #: AMRe21440**

**Molecular Weight**

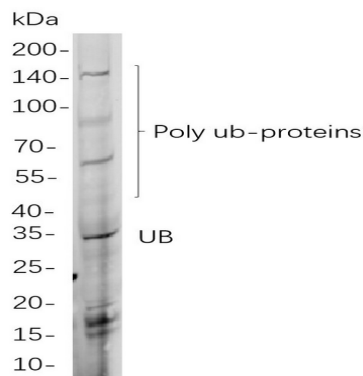
Calculated MW:26kD;Observed MW:13-250kD

## Background

Cell localization: Cytoplasm. This gene encodes ubiquitin, one of the most conserved proteins known. Ubiquitin has a major role in targeting cellular proteins for degradation by the 26S proteasome. It is also involved in the maintenance of chromatin structure, the regulation of gene expression, and the stress response. Ubiquitin is synthesized as a precursor protein consisting of either polyubiquitin chains or a single ubiquitin moiety fused to an unrelated protein. This gene consists of three direct repeats of the ubiquitin coding sequence with no spacer sequence. Consequently, the protein is expressed as a polyubiquitin precursor with a final amino acid after the last repeat. An aberrant form of this protein has been detected in patients with Alzheimer's disease and Down syndrome. Pseudogenes of this gene are located on chromosomes 1, 2, 13, and 17. Alternative splicing results in multiple transcript variants. [provided by RefSeq]

## Research Area

## Image Data



Western blot analysis of lysates from HEK293

cells, using Ub Rabbit mAb. The HRP-conjugated Goat anti-Rabbit IgG antibody was used to detect the antibody.

## Note

For research use only.