

Product Name: Lck Rabbit Monoclonal Antibody
Catalog #: AMRe21438

Summary

Production Name	Lck Rabbit Monoclonal Antibody
Description	Rabbit Monoclonal Antibody
Host	Rabbit
Application	WB,IHC,IF,IP,ELISA
Reactivity	Human,Mouse,Rat

Performance

Conjugation	Unconjugated
Modification	Unmodified
Isotype	IgG,Kappa
Clonality	Monoclonal
Form	Liquid
Storage	Store at 4°C short term. Aliquot and store at -20°C long term. Avoid freeze/thaw cycles.
Buffer	PBS, 50% glycerol, 0.05% Proclin 300, 0.05%BSA
Purification	Protein A

Immunogen

Gene Name	LCK
Alternative Names	LCK;Tyrosine-protein kinase Lck;Leukocyte C-terminal Src kinase;LSK;Lymphocyte cell-specific protein-tyrosine kinase;Protein YT16;Proto-oncogene Lck;T cell-specific protein-tyrosine kinase;p56-LCK
Gene ID	3932.0
SwissProt ID	P06239.

Application

Dilution Ratio	IHC 1:200-1:1000;WB 1:500-1:2000;IF 1:200-1:1000;ELISA 1:5000-1:20000;IP 1:50-1:200;
Molecular Weight	Calculated MW:58kD;Observed MW:58kD

Product Name: Lck Rabbit Monoclonal Antibody
Catalog #: AMRe21438

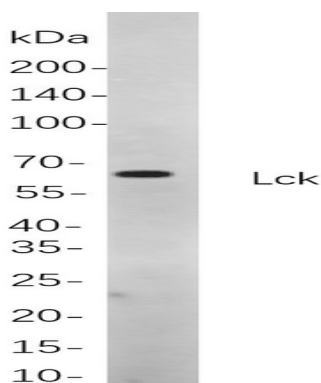


Background

Cell localization: Cytoplasm, Membrane. This gene is a member of the Src family of protein tyrosine kinases (PTKs). The encoded protein is a key signaling molecule in the selection and maturation of developing T-cells. It contains N-terminal sites for myristylation and palmitoylation, a PTK domain, and SH2 and SH3 domains which are involved in mediating protein-protein interactions with phosphotyrosine-containing and proline-rich motifs, respectively. The protein localizes to the plasma membrane and pericentrosomal vesicles, and binds to cell surface receptors, including CD4 and CD8, and other signaling molecules. Multiple alternatively spliced variants encoding different isoforms have been described. [provided by RefSeq, Aug 2016],

Research Area

Image Data



Western blot analysis of lysates from Jurkat cells, using Lck Rabbit mAb. The HRP-conjugated Goat anti-Rabbit IgG antibody was used to detect the antibody.

Note

For research use only.