

**Product Name: TGF  $\beta$ 1 Rabbit Monoclonal Antibody**  
**Catalog #: AMRe21437**



## Summary

<b>Production Name</b>	TGF $\beta$ 1 Rabbit Monoclonal Antibody
<b>Description</b>	Rabbit Monoclonal Antibody
<b>Host</b>	Rabbit
<b>Application</b>	WB,IHC,IF,IP,ELISA
<b>Reactivity</b>	Human,Mouse,Rat

## Performance

<b>Conjugation</b>	Unconjugated
<b>Modification</b>	Unmodified
<b>Isotype</b>	IgG,Kappa
<b>Clonality</b>	Monoclonal
<b>Form</b>	Liquid
<b>Storage</b>	Store at 4°C short term. Aliquot and store at -20°C long term. Avoid freeze/thaw cycles.
<b>Buffer</b>	PBS, 50% glycerol, 0.05% Proclin 300, 0.05%BSA
<b>Purification</b>	Protein A

## Immunogen

<b>Gene Name</b>	TGFB1 TGFB
<b>Alternative Names</b>	Transforming growth factor beta-1;TGF-beta-1;[Cleaved into: Latency-associated peptide;LAP;]
<b>Gene ID</b>	7040.0
<b>SwissProt ID</b>	P01137.

## Application

<b>Dilution Ratio</b>	IHC 1:2000-1:5000;WB 1:1000-1:5000;IF 1:200-1:1000;ELISA 1:5000-1:20000;IP 1:50-1:200;
<b>Molecular Weight</b>	Calculated MW:44kD;Observed MW:44kD,13kD

## Background

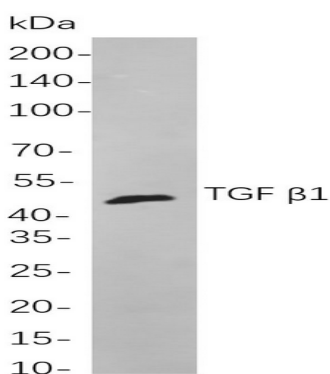
**Product Name: TGF  $\beta$ 1 Rabbit Monoclonal Antibody**  
**Catalog #: AMRe21437**



Cell localization: Secreted. transforming growth factor beta 1 (TGFB1) Homo sapiens This gene encodes a secreted ligand of the TGF-beta (transforming growth factor-beta) superfamily of proteins. Ligands of this family bind various TGF-beta receptors leading to recruitment and activation of SMAD family transcription factors that regulate gene expression. The encoded preproprotein is proteolytically processed to generate a latency-associated peptide (LAP) and a mature peptide, and is found in either a latent form composed of a mature peptide homodimer, a LAP homodimer, and a latent TGF-beta binding protein, or in an active form consisting solely of the mature peptide homodimer. The mature peptide may also form heterodimers with other TGFB family members. This encoded protein regulates cell proliferation, differentiation and growth, and can modulate expression and activation of other growth factors including interferon gamma and tumor necrosis factor alpha. This gene i

## Research Area

## Image Data



Western blot analysis of lysates from HepG2 cells, using TGF  $\beta$ 1 Rabbit mAb. The HRP-conjugated Goat anti-Rabbit IgG antibody was used to detect the antibody.

## Note

For research use only.