

Product Name: MEK1 Rabbit Monoclonal Antibody
Catalog #: AMRe21431



Summary

Production Name	MEK1 Rabbit Monoclonal Antibody
Description	Rabbit Monoclonal Antibody
Host	Rabbit
Application	WB,IHC,IF,IP,ELISA
Reactivity	Human,Mouse,Rat

Performance

Conjugation	Unconjugated
Modification	Unmodified
Isotype	IgG,Kappa
Clonality	Monoclonal
Form	Liquid
Storage	Store at 4°C short term. Aliquot and store at -20°C long term. Avoid freeze/thaw cycles.
Buffer	PBS, 50% glycerol, 0.05% Proclin 300, 0.05%BSA
Purification	Protein A

Immunogen

Gene Name	MAP2K1 MAP2K1;MEK1;PRKMK1;Dual specificity mitogen-activated protein kinase kinase 1;MAP kinase kinase 1;MAPKK 1;MKK1;ERK activator kinase 1;MAPK/ERK kinase 1;MEK 1
Alternative Names	
Gene ID	5604.0
SwissProt ID	Q02750.

Application

Dilution Ratio	IHC 1:2000-1:5000;WB 1:1000-1:5000;IF 1:200-1:1000;ELISA 1:5000-1:20000;IP 1:50-1:200;
Molecular Weight	Calculated MW:43kD;Observed MW:43kD

Product Name: MEK1 Rabbit Monoclonal Antibody
Catalog #: AMRe21431

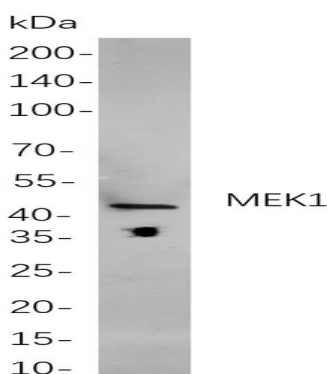


Background

Cell localization: Cytoplasm, Nucleus. The protein encoded by this gene is a member of the dual specificity protein kinase family, which acts as a mitogen-activated protein (MAP) kinase kinase. MAP kinases, also known as extracellular signal-regulated kinases (ERKs), act as an integration point for multiple biochemical signals. This protein kinase lies upstream of MAP kinases and stimulates the enzymatic activity of MAP kinases upon wide variety of extra- and intracellular signals. As an essential component of MAP kinase signal transduction pathway, this kinase is involved in many cellular processes such as proliferation, differentiation, transcription regulation and development. [provided by RefSeq, Jul 2008],

Research Area

Image Data



Western blot analysis of lysates from A431

cells, using MEK1 Rabbit mAb. The HRP-conjugated Goat anti-Rabbit IgG antibody was used to detect the antibody.

Note

For research use only.