

**Product Name: Paxillin Rabbit Monoclonal Antibody**  
**Catalog #: AMRe21430**



## Summary

<b>Production Name</b>	Paxillin Rabbit Monoclonal Antibody
<b>Description</b>	Rabbit Monoclonal Antibody
<b>Host</b>	Rabbit
<b>Application</b>	WB,IHC,IF,IP,ELISA
<b>Reactivity</b>	Human,Mouse,Rat

## Performance

<b>Conjugation</b>	Unconjugated
<b>Modification</b>	Unmodified
<b>Isotype</b>	IgG,Kappa
<b>Clonality</b>	Monoclonal
<b>Form</b>	Liquid
<b>Storage</b>	Store at 4°C short term. Aliquot and store at -20°C long term. Avoid freeze/thaw cycles.
<b>Buffer</b>	PBS, 50% glycerol, 0.05% Proclin 300, 0.05%BSA
<b>Purification</b>	Protein A

## Immunogen

<b>Gene Name</b>	PXN
<b>Alternative Names</b>	PXN;Paxillin
<b>Gene ID</b>	5829.0
<b>SwissProt ID</b>	P49023.

## Application

<b>Dilution Ratio</b>	IHC 1:1000-1:4000;WB 1:1000-1:5000;IF 1:200-1:1000;ELISA 1:5000-1:20000;IP 1:50-1:200;
<b>Molecular Weight</b>	Calculated MW:68kD;Observed MW:68kD

## Background

Cell localization:Cytoplasm.This gene encodes a cytoskeletal protein involved in actin-membrane attachment at sites of cell

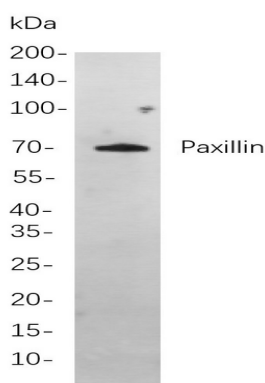
**Product Name: Paxillin Rabbit Monoclonal Antibody**  
**Catalog #: AMRe21430**



adhesion to the extracellular matrix (focal adhesion). Alternatively spliced transcript variants encoding different isoforms have been described for this gene. These isoforms exhibit different expression pattern, and have different biochemical, as well as physiological properties (PMID:9054445). [provided by RefSeq, Aug 2011],

## Research Area

## Image Data



Western blot analysis of lysates from HeLa

cells, using Paxillin Rabbit mAb. The HRP-conjugated Goat anti-Rabbit IgG antibody was used to detect the antibody.

## Note

For research use only.